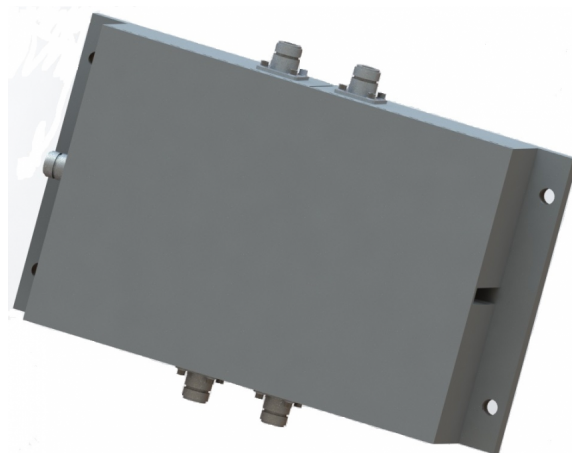


Features:

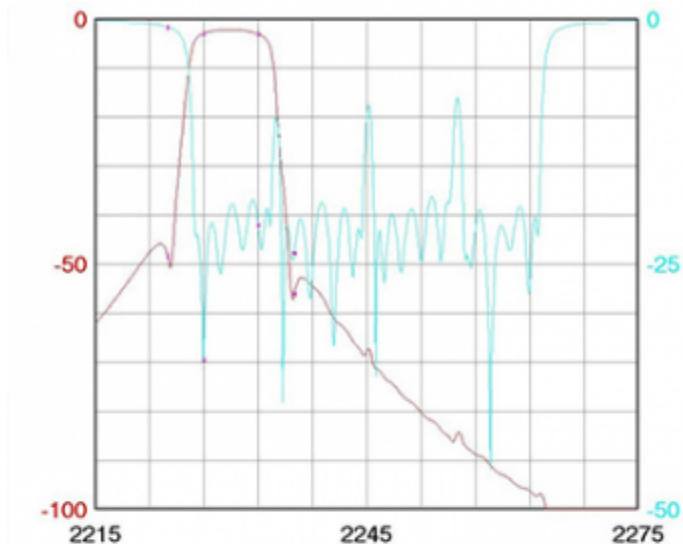
- 6-pole Elliptic Combine Bandpass Filter, Cross-Coupled, Each Channel
- >40 dB Isolation Out of Band / Adjacent Channel Rejection, Each Channel
- Temperature Compensated Design
- +/- 3 MHz Pass Band, Each Channel
- 3.5 dB Insertion Loss In-Band, Each Channel
- Sealed for Outdoor Use
- Small Form Factor
- Perfect for Law Enforcement Covert Video Surveillance
- Eliminates 3 Antennas & 4 Individual Band Pass Filters
- Simplifies Complex Multi-System Installations



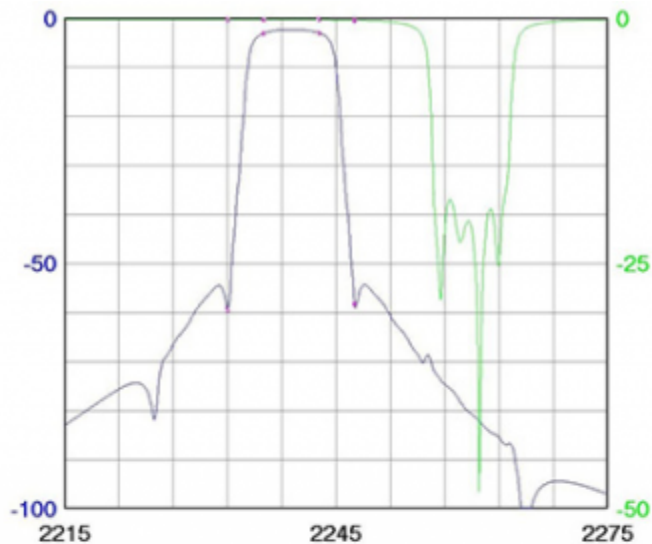
Filter Specifications

Parameter	Value	Units	Tolerance
Filter Frequency Band	S Band		
Filter Impedance	50	Ohms	
Filter Min Frequency	2.23 / 2,230	GHz / MHz	
Filter Max Frequency	2.26 / 2,260	GHz / MHz	
Insertion Loss	-3.5	dB	@ FO +/- 3 MHz +25°C, -4.0 dB @ FO +/- 3 MHz +70°C
Return Loss	14	dB	
Rejection 1	-40	dBc	Min @ FO +/- 7 MHz
Filter Length	6.26 / 159.00	inches / mm	
Filter Width	3.30 / 83.82	inches / mm	
Filter Height	1.68 / 42.67	inches / mm	
Filter Power CW	35	Watts	
Filter Power Peak	100	Watts	

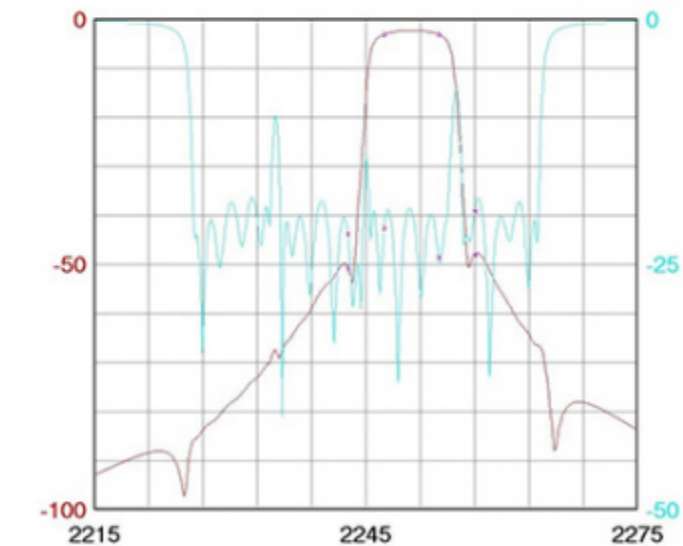
Parameter	Value	Units	Tolerance
Operating Temp	-20 to +70	C	
Storage Temp	-10 to +100	C	
Product Length	6.26 / 159.00	inches / mm	
Product Width	3.30 / 83.82	inches / mm	
Product Height	1.68 / 42.67	inches / mm	
RF Connectors	Type-N(f)		



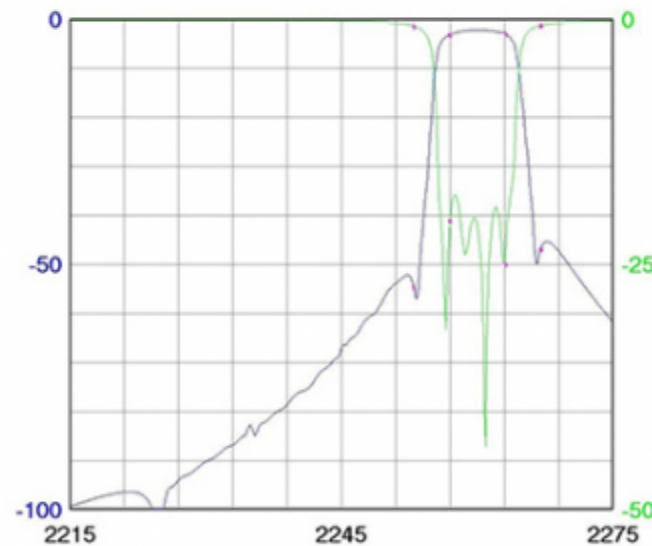
DB[S21] --		DB[S11] --	
2223	2227	2233	2237
-48.2667	-2.72403	-2.86819	-56.0642
-0.702432	-34.7245	-20.9915	-23.8153



DB[S31] --		DB[S55] --	
2233	2237	2243	2247
-59.3765	-2.85779	-2.78592	-58.2386
-0.24443	-0.034276	-0.065593	-0.119398

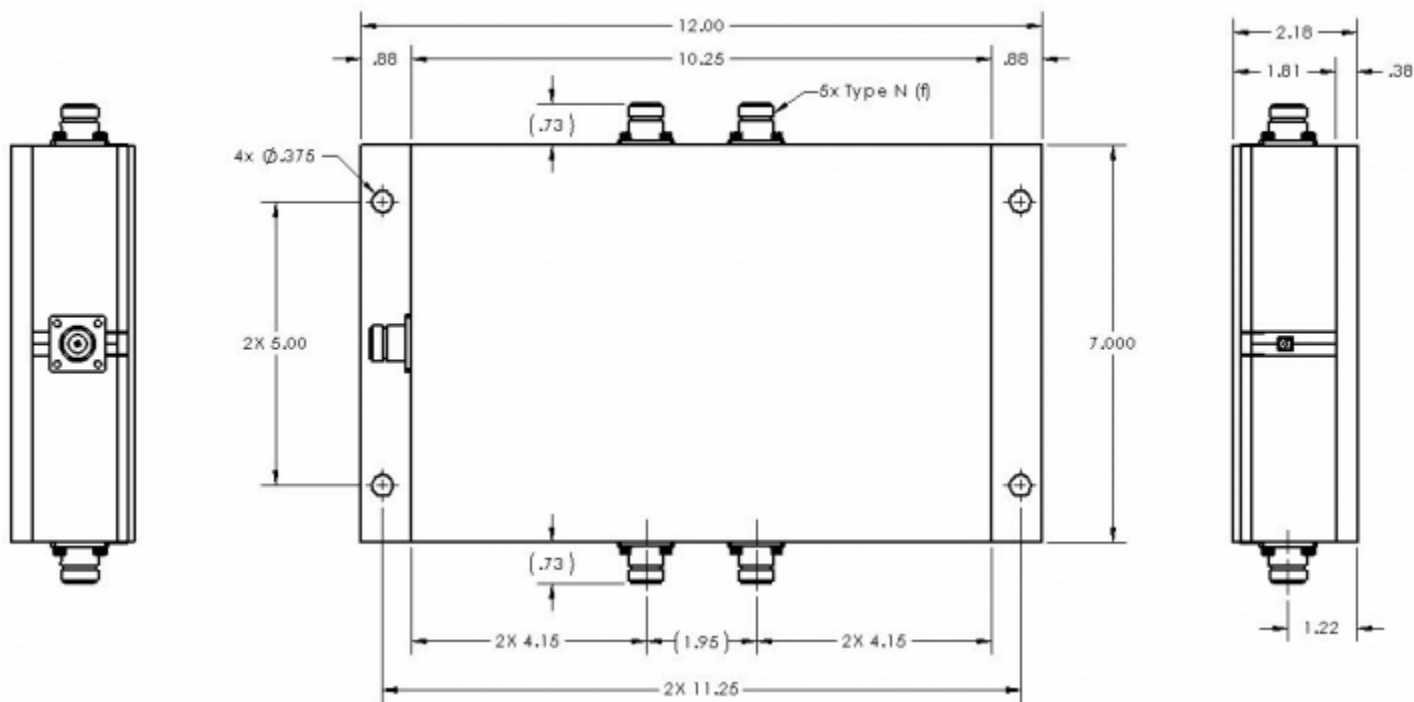


DB[S41] --		DB[S11] --	
2243	2247	2253	2257
-50.5892	-2.91253	-2.88786	-47.9397
-21.8574	-21.1883	-24.2007	-19.5135



DB[S51] --		DB[S55] --	
2253	2257	2263	2267
-54.739	-2.94857	-2.80687	-46.8447
-0.619096	-20.5096	-24.981	-0.548814

Filter Response Plot



Engineering Drawing

Dimensions are in inches