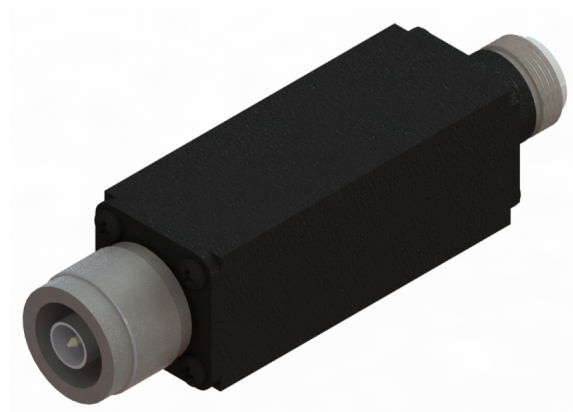


Features:

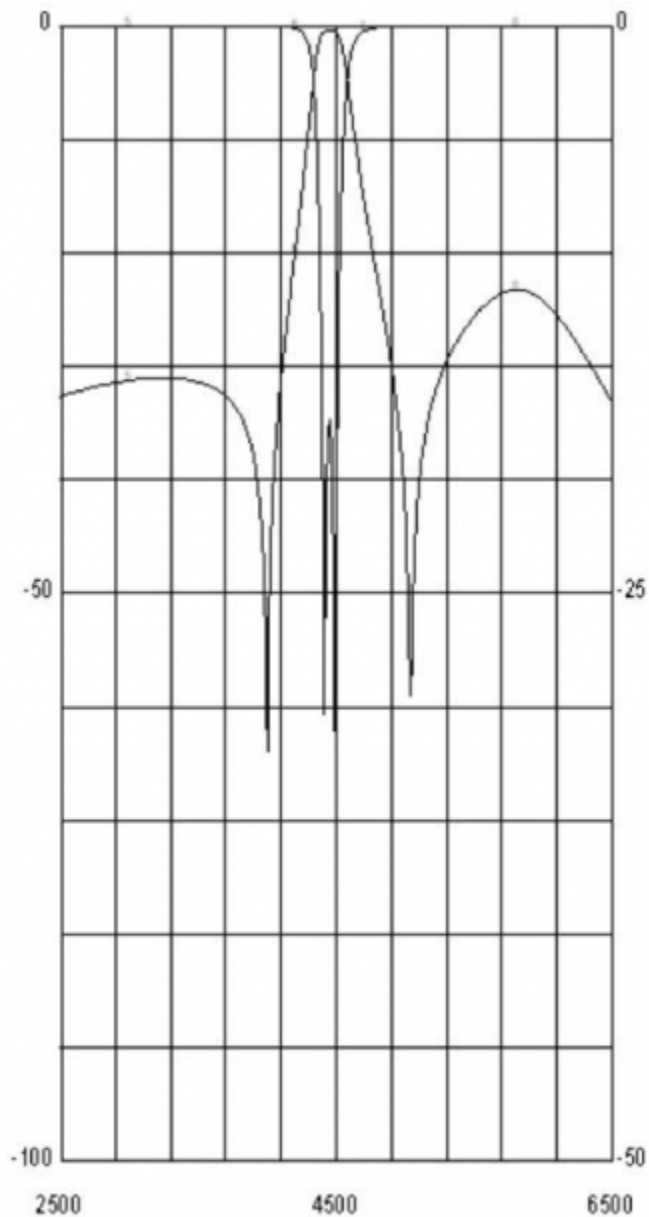
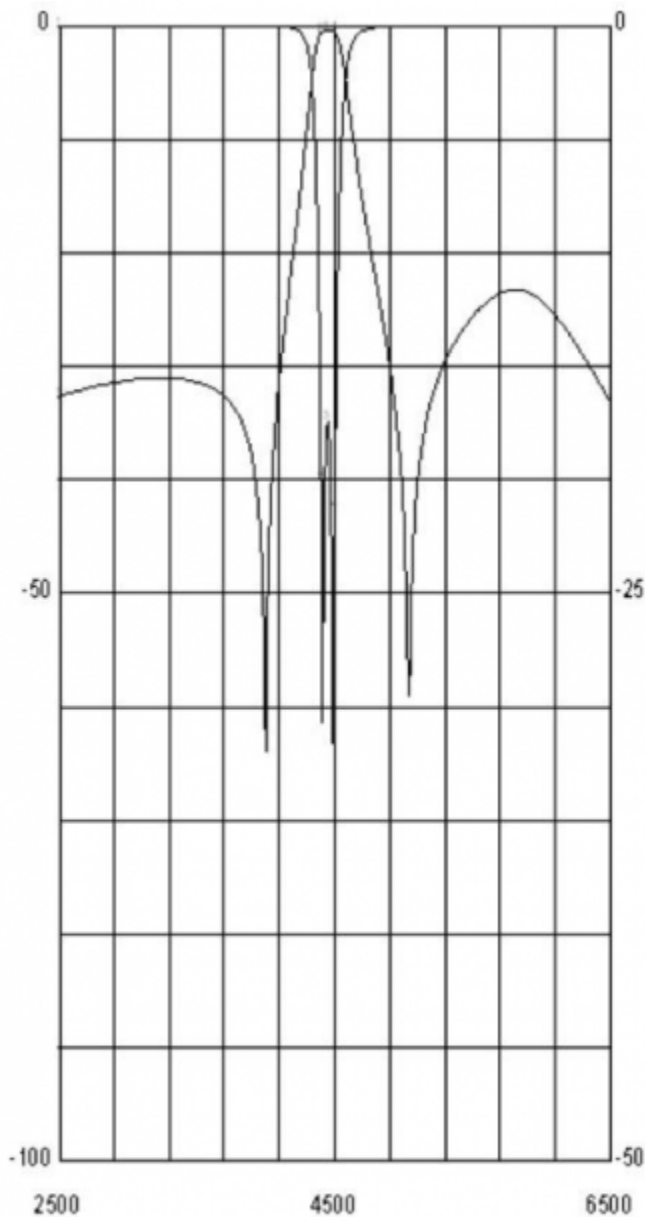
- 4.4 - 4.5 GHz
- Machined Brass Housing
- Triple Coat Black Painted Housing
- Type: 6mm, 2 Section cross coupled with cleanup low pass
- N-male & N-Female RF connectors
- Small Form Factor
- Indoor/Outdoor Use
- Water Resistant Sealed Unit
- Polyolefin Required On Threads For Outdoor Use



Filter Specifications

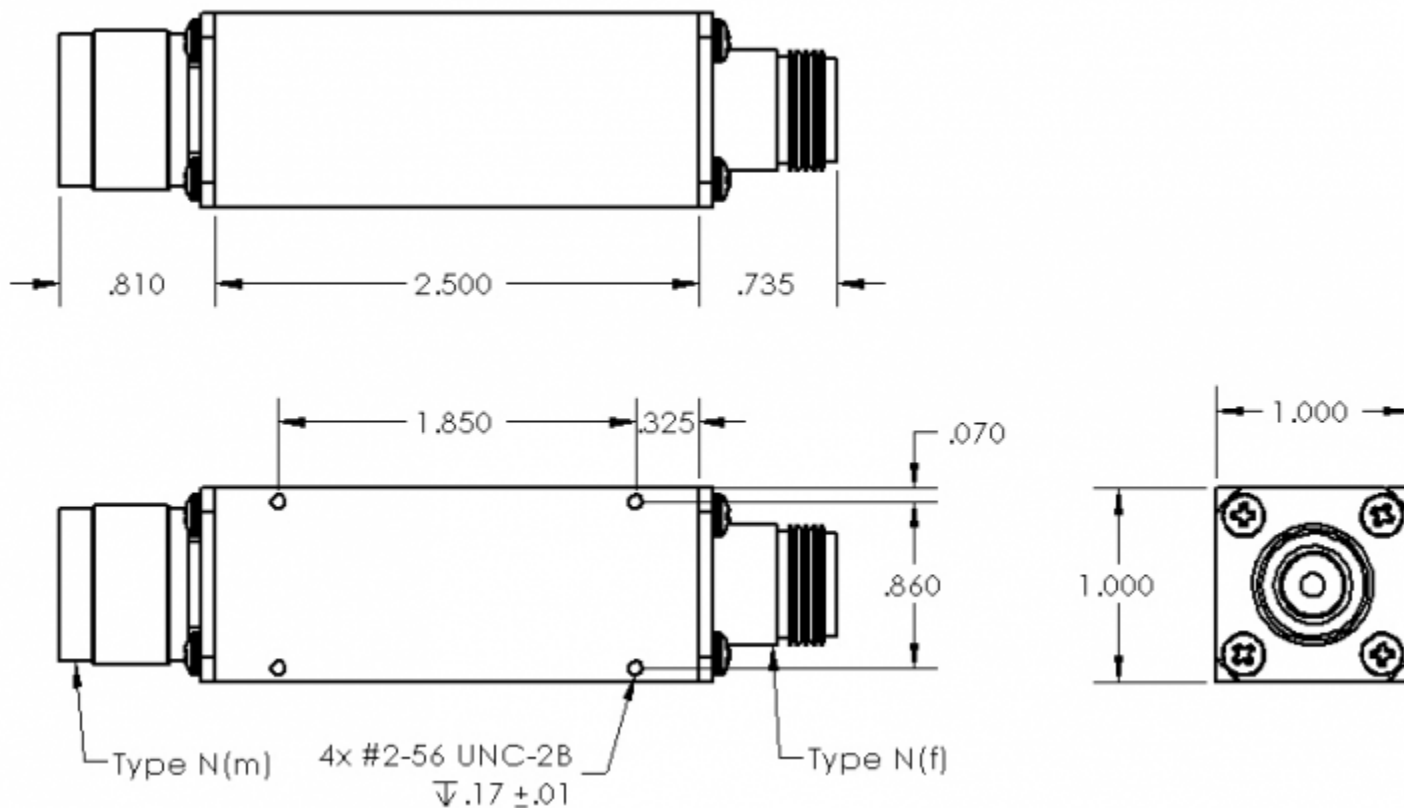
Parameter	Value	Units	Tolerance
Filter Frequency Band	C Band		
Filter Impedance	50	Ohms	
Filter Min Frequency	4.4 / 4,400	GHz / MHz	
Filter Max Frequency	4.5 / 4,500	GHz / MHz	
Filter Frequency of Operation	4.45 / 4,450	GHz / MHz	
Insertion Loss	1	dB	
Return Loss	15	dB	
Rejection 1	-30	dBc	Min DC to 2000 MHz
Rejection 2	-25	dBc	Min 2000 to 4000 MHz
Rejection 3	-14	dBc	Min 4000 to 4200 MHz
Rejection 4	-10	dBc	Min 4700 to 4900 MHz
Rejection 5	-20	dBc	Min 4900 to 6300 MHz

Parameter	Value	Units	Tolerance
Rejection 6	-25	dBc	Min 6400 to 7000 MHz
Filter Length	2.50 / 63.50	inches / mm	
Filter Width	1.00 / 25.40	inches / mm	
Filter Height	1.00 / 25.40	inches / mm	
Filter Power CW	2	Watts	
Operating Temp	-55 to +60	C	
Storage Temp	-55 to +125	C	
Product Length	2.50 / 63.50	inches / mm	
Product Width	1.00 / 25.40	inches / mm	
Product Height	1.00 / 25.40	inches / mm	
RF Connectors	Type-N(m)		



DB[S21]		DB[S11]		DB[S21]		DB[S22]	
2500	4400	4450	4500	3000	4200	4700	5800
-32.6849	-0.578584	-0.503362	-0.538702	-31.2667	-19.974	-15.3685	-23.2702
-0.004807	-20.0286	-17.3771	-21.2377	-0.006876	-0.121976	-0.235905	-0.35310

Filter Response Plot



Engineering Drawing

Dimensions are in inches