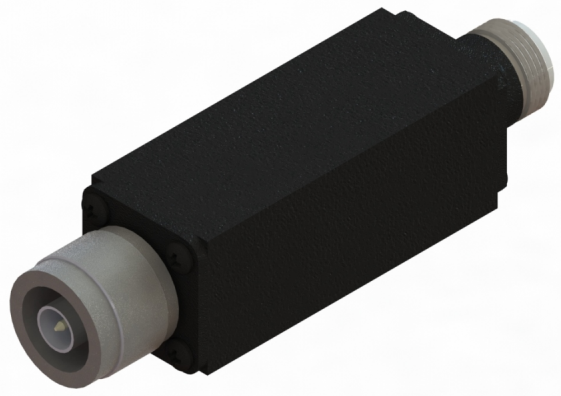


Features:

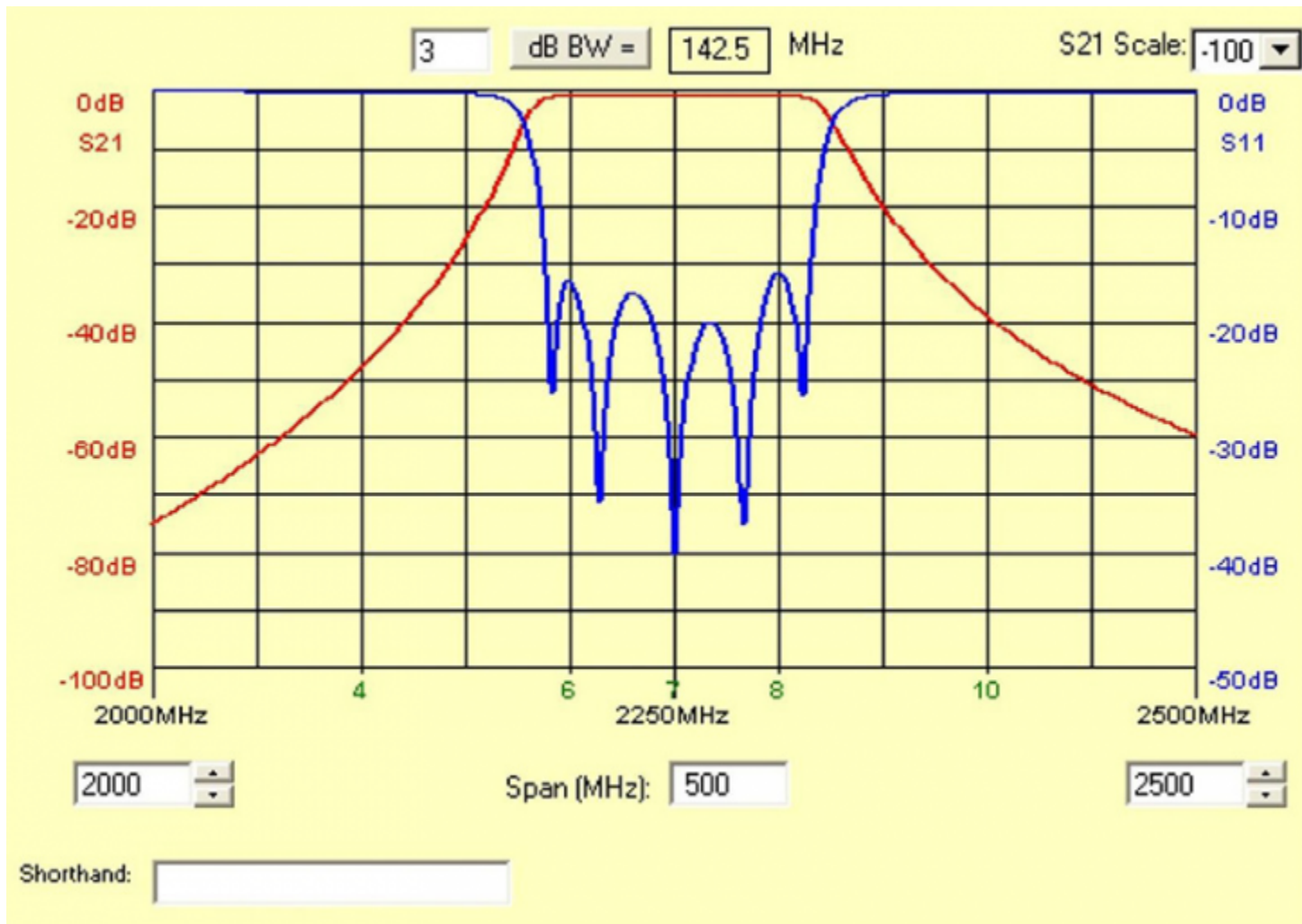
- 2.2 - 2.3 GHz
- Machined Brass Housing
- Triple Coat Black Painted Housing
- Type: 8mm, 5 Section cross coupled with cleanup low pass
- N-male & N-Female RF connectors
- Small Form Factor
- Indoor/Outdoor Use
- Water Resistant Sealed Unit
- Polyolefin Required On Threads For Outdoor Use



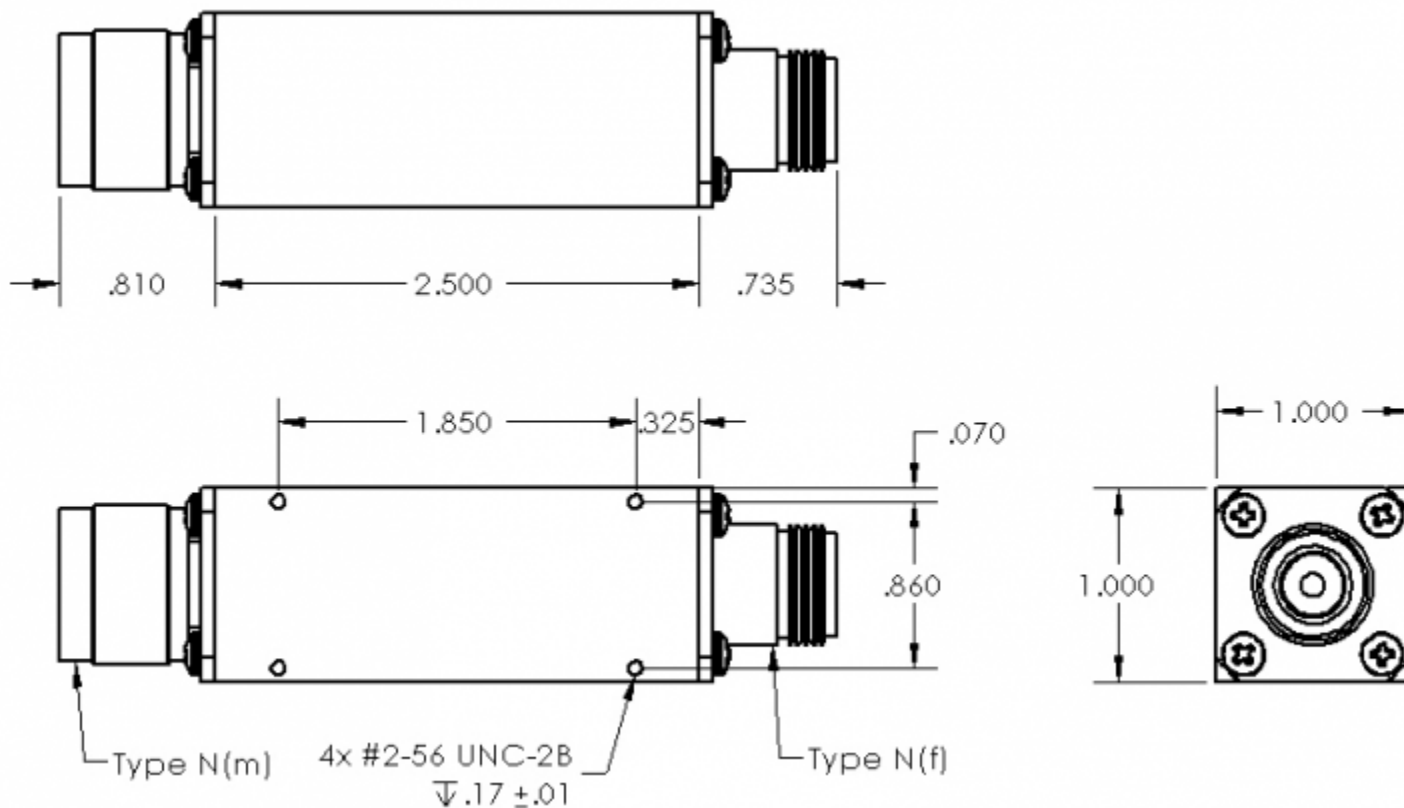
Filter Specifications

Parameter	Value	Units	Tolerance
Filter Frequency Band	S Band		
Filter Impedance	50	Ohms	
Filter Min Frequency	2.2 / 2,200	GHz / MHz	
Filter Max Frequency	2.3 / 2,300	GHz / MHz	
Filter Frequency of Operation	2.25 / 2,250	GHz / MHz	
Insertion Loss	1	dB	
Return Loss	15	dB	
Rejection 1	-40	dBc	Min DC to 2100 MHz
Rejection 3	-30	dBc	Min 2400 - 4500 MHz
Filter Length	2.50 / 63.50	inches / mm	
Filter Width	1.00 / 25.40	inches / mm	
Filter Height	1.00 / 25.40	inches / mm	

Parameter	Value	Units	Tolerance
Filter Power CW	2	Watts	
Operating Temp	-20 to +60	C	
Storage Temp	-55 to +125	C	
Product Length	2.50 / 63.50	inches / mm	
Product Width	1.00 / 25.40	inches / mm	
RF Connectors	N(m),N(f)		



Filter Response Plot



Engineering Drawing

Dimensions are in inches