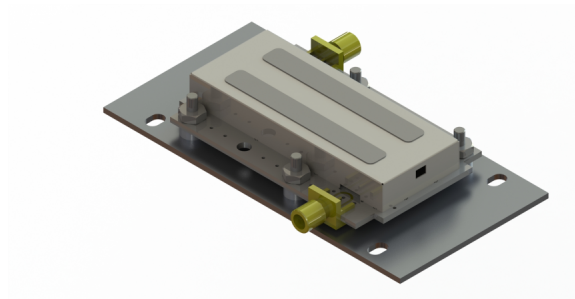


Features:

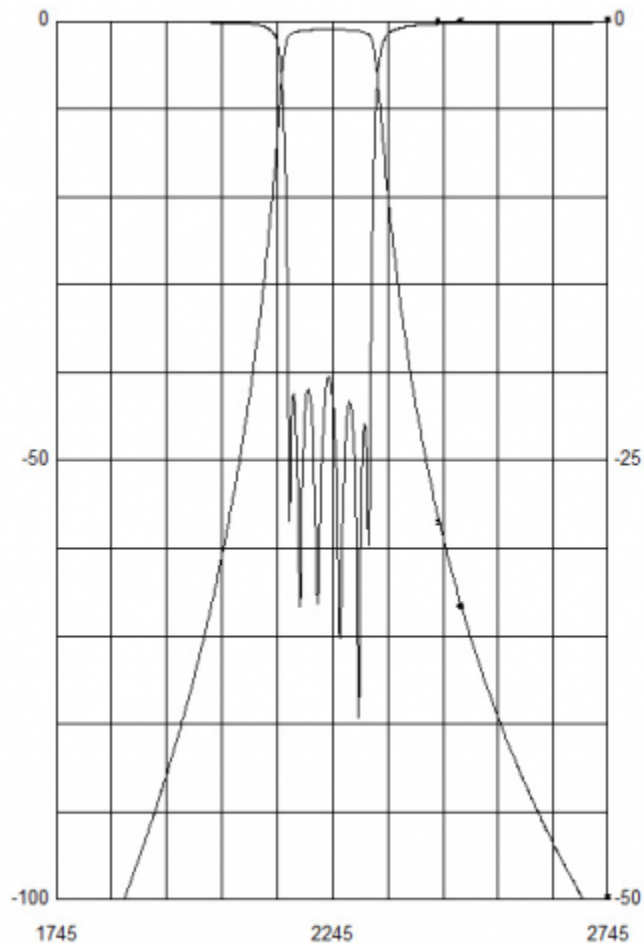
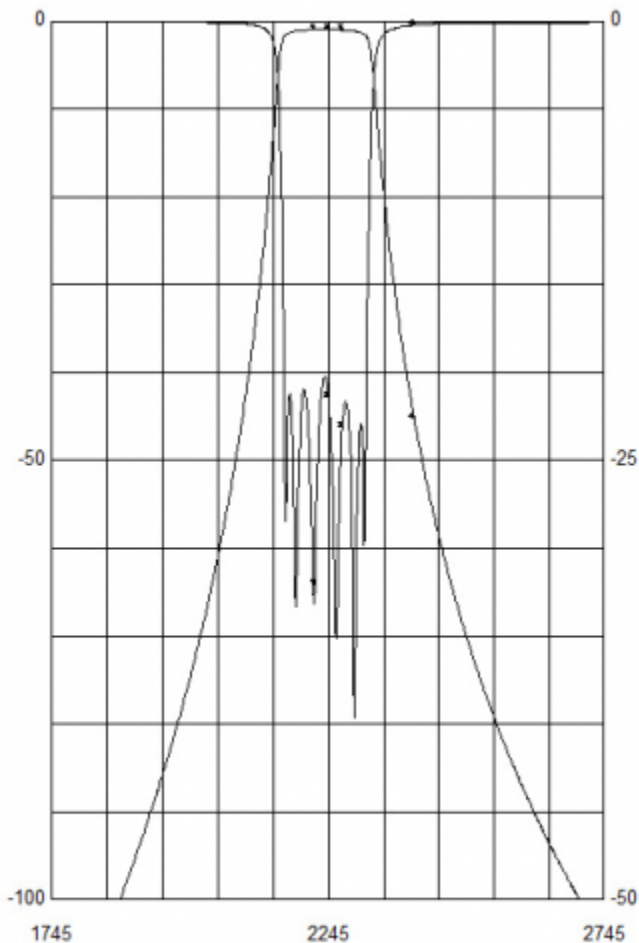
- 2,220 - 2,270 MHz Frequency Range
- 8mm, 6-pole Ceramic Band Pass Filter
- >60dB Rejection at 2,480 MHz
- Temperature Compensated
- Small Form Factor
- Perfect For Vehicle Concealments



Filter Specifications

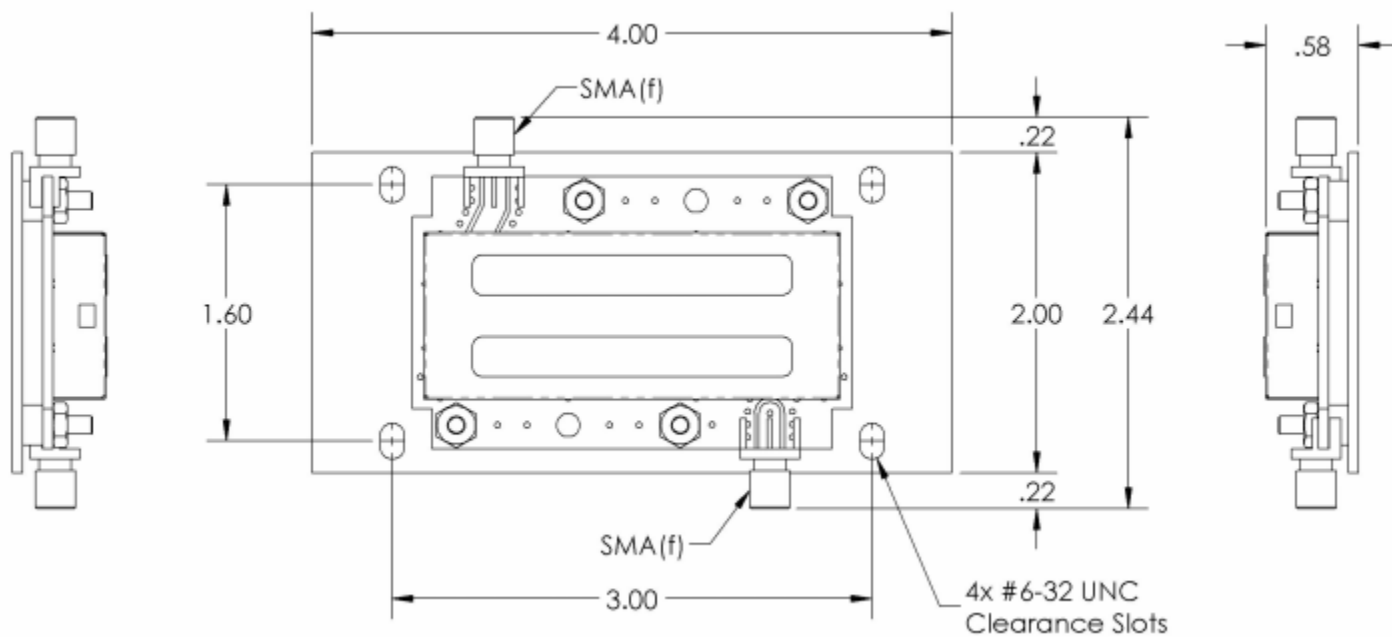
Parameter	Value	Units	Tolerance
Filter Frequency Band	S Band		
Filter Impedance	50	Ohms	
Filter Min Frequency	2.2 / 2,200	GHz / MHz	
Filter Max Frequency	2.27 / 2,270	GHz / MHz	
Insertion Loss	1.2	dB	
Return Loss	15	dB	
Rejection 1	-40	dBc	Min @ 2400 MHz
Rejection 2	-50	dBc	Min @ 2440 MHz
Rejection 3	-60	dBc	Min @ 2480 MHz
Filter Length	4.00 / 101.60	inches / mm	
Filter Width	2.44 / 62.08	inches / mm	
Filter Height	0.59 / 14.99	inches / mm	

Parameter	Value	Units	Tolerance
Filter Power CW	10	Watts	
Filter Power Peak	50	Watts	
Operating Temp	-20 to +60	C	
Storage Temp	-55 to +125	C	
Product Length	4.00 / 101.60	inches / mm	
Product Width	2.44 / 62.08	inches / mm	
Product Height	0.59 / 14.99	inches / mm	
RF Connectors	SMA(f)		



DE[S21]		DE[S11]		DE[S21]		DE[S22]	
2220	2245	2270	2400	2440	2480	2745	2745
-0.931113	-0.940059	-0.989964	-45.1489	-57.3608	-66.9827	-104.815	-104.815
-32.1179	-21.3848	-23.067	-0.232349	-0.157979	-0.12038	-0.051718	-0.051718

Filter Response Plot



Engineering Drawing

Dimensions are in inches