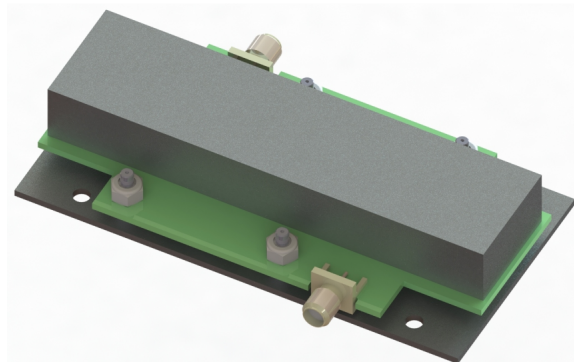


Features:

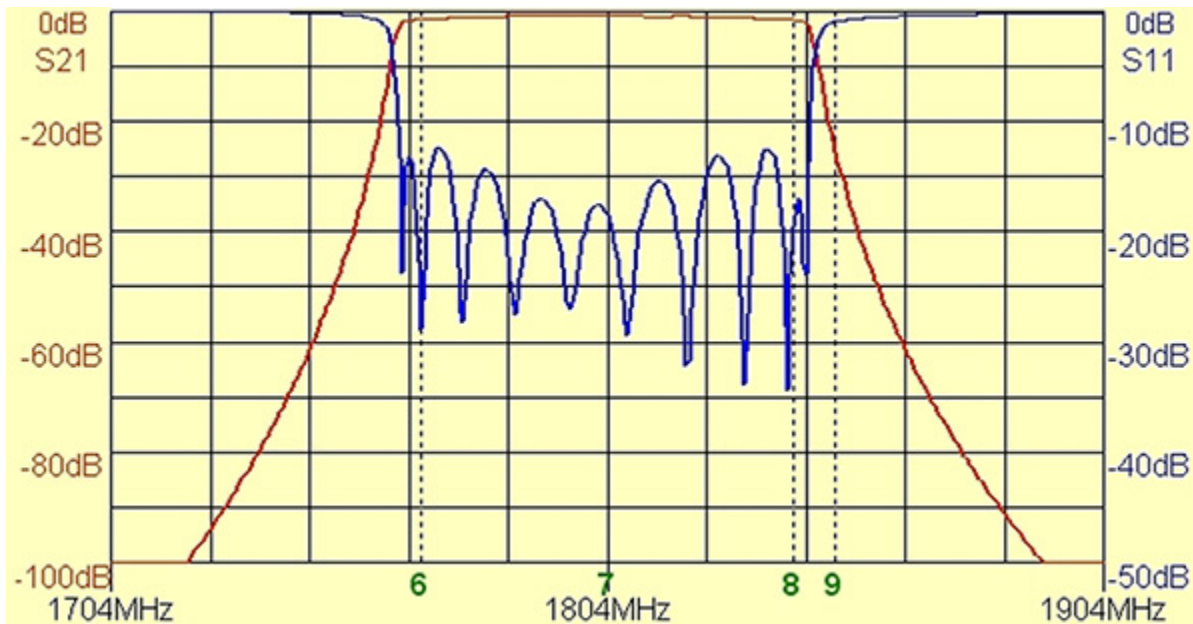
- 1,766.5 - 1,841.5 MHz Frequency Range
- Slot Coupled Ceramic Band Pass Filter
- 8 pole double cross-coupled
- >60dB Rejection at 2,225 MHz
- Temperature Compensated
- Small Form Factor
- Perfect For Vehicle Concealments



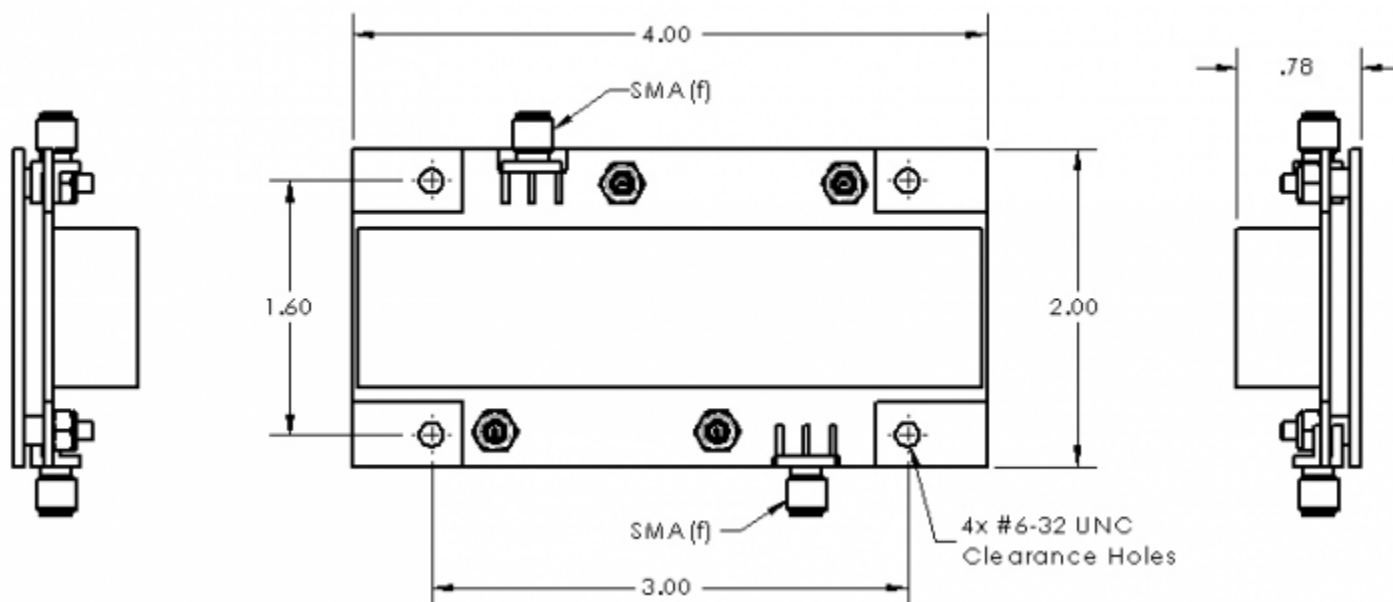
Filter Specifications

Parameter	Value	Units	Tolerance
Filter Frequency Band	L Band		
Filter Impedance	50	Ohms	
Filter Min Frequency	1.767 / 1,767	GHz / MHz	
Filter Max Frequency	1.842 / 1,842	GHz / MHz	
Insertion Loss	1.5	dB	
Return Loss	15	dB	
Rejection 1	-20	dB	Min @ 1850 MHz
Rejection 2	-60	dB	Min @ 2225 MHz
Rejection 3	-45	dB	Min @ 3000 MHz
Filter Length	4.00 / 101.60	inches / mm	
Filter Width	2.43 / 61.72	inches / mm	
Filter Height	0.75 / 19.05	inches / mm	

Parameter	Value	Units	Tolerance
Operating Temp	-20 to +60	C	
Storage Temp	-55 to +125	C	
Product Length	4.00 / 101.60	inches / mm	
Product Width	2.43 / 61.72	inches / mm	
Product Height	0.75 / 19.05	inches / mm	
RF Connectors	SMA(f)		



Filter Response Plot



Engineering Drawing

Dimensions are in inches