

Features:

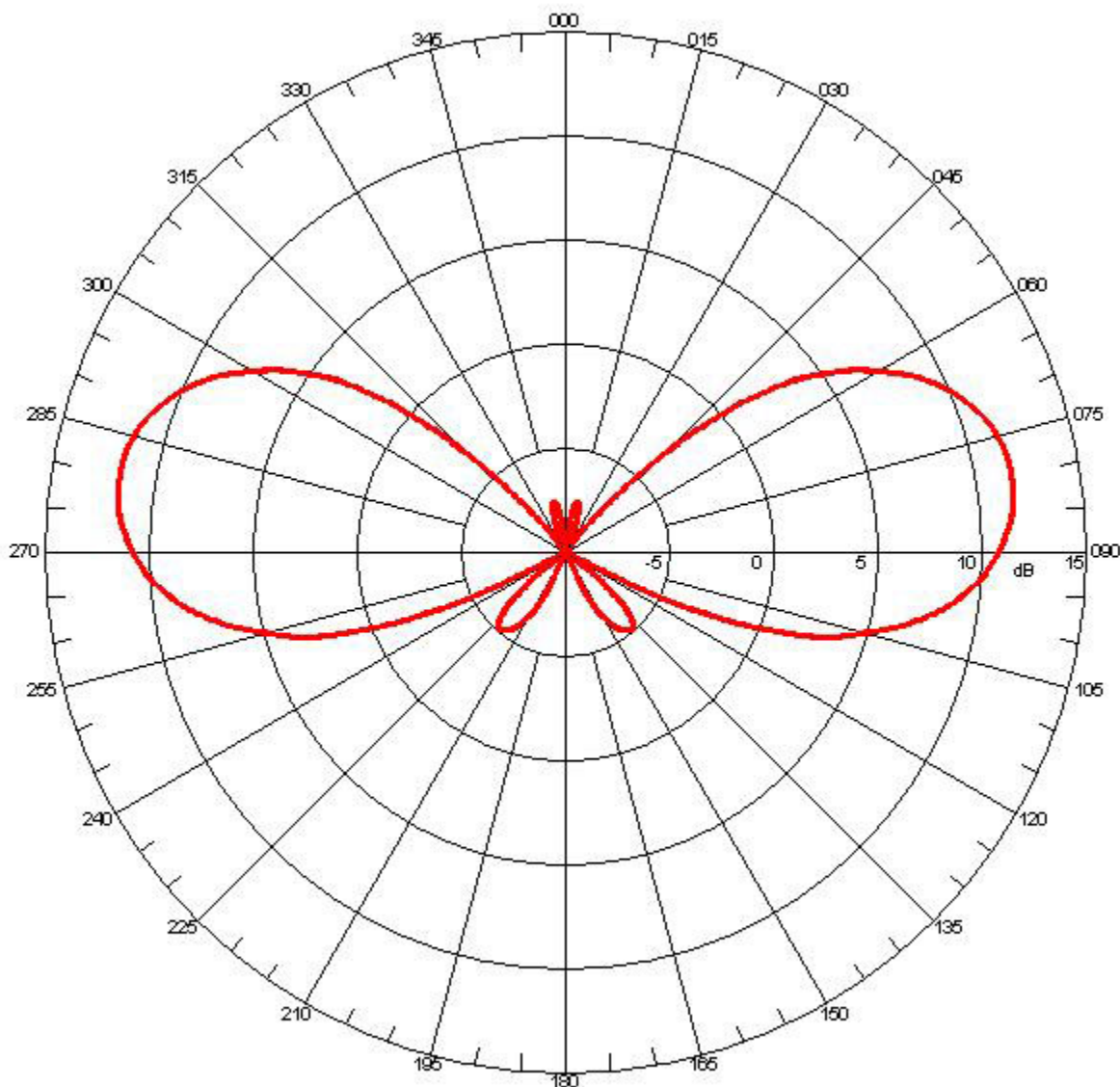
- 6 Panel Array
- Broad Band Coverage
- 2.0 - 2.5 GHz
- 12 dBi Gain Per Panel
- Rugged Polycarbonate Radome
- 0° to 10° User Adjustable Tilt
- Can be used with customer-provided Block Downconverter (not included)
- Fully Maintainable
- Internal Configurable RF Filters
- Mounting Kit for Permanent & Temporary Mounting Included
- Block Down Converter Specifications:
 - S Band, 2.0 - 2.5 GHz
 - 1 dB Bandwidth
 - 2.8 GHz LO Bandwidth



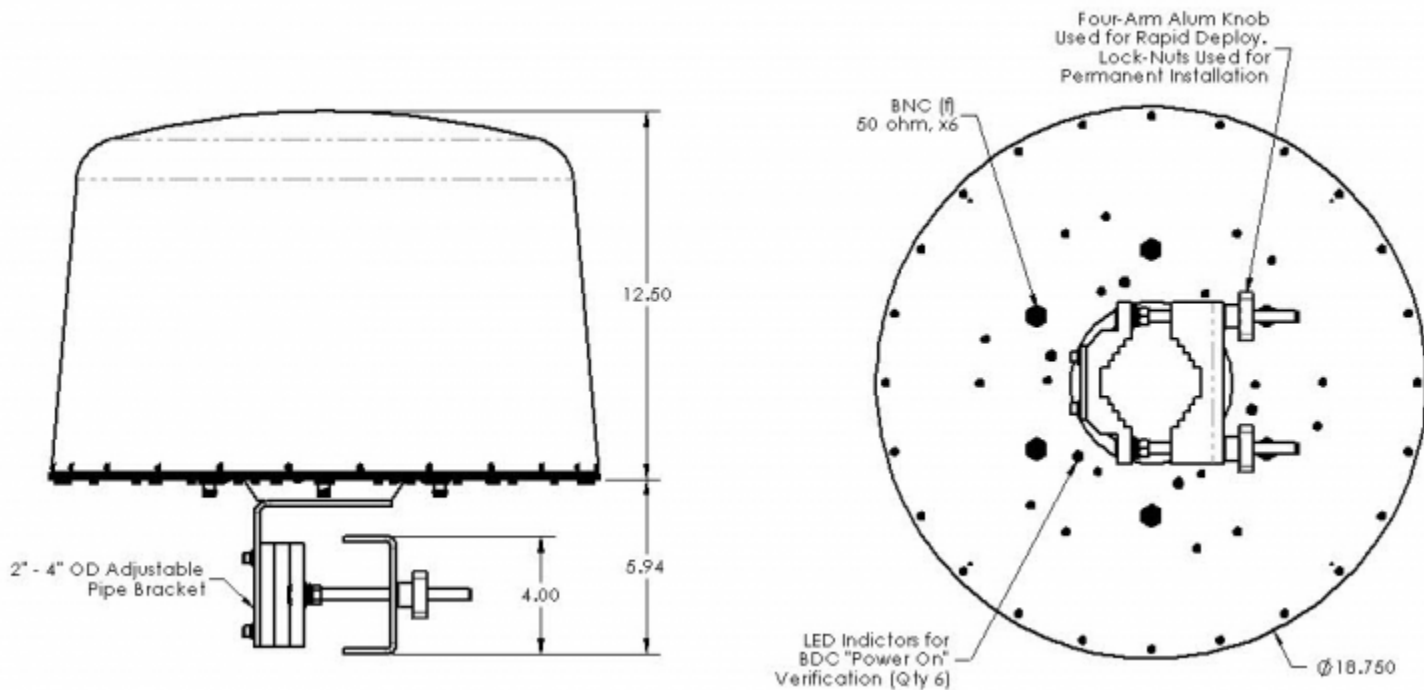
Antenna Specifications

Parameter	Value	Units	Tolerance
Frequency Band	S		
Impedance	50	Ohms	
Minimum Frequency	2.0 / 2,000	GHz / MHz	
Maximum Frequency	2.5 / 2,500	GHz / MHz	
Frequency Bandwidth	0.5 / 500	GHz / MHz	
Maximum Gain	12	dBi	
Polarization	Vertical		
Horizontal (AZ) Beamwidth	60	Degrees	
Vertical (EL) Beamwidth	30	Degrees	
Color	White		
Mount Style	Pole Mount		
RF Connector Type	BNC(f)		

Parameter	Value	Units	Tolerance
Product Height	18.40 / 467.36	inches / mm	
Product Diameter	18.75 / 476.25	inches / mm	



Elevation Pattern



Engineering Drawing

Dimensions are in inches