

**Features:**

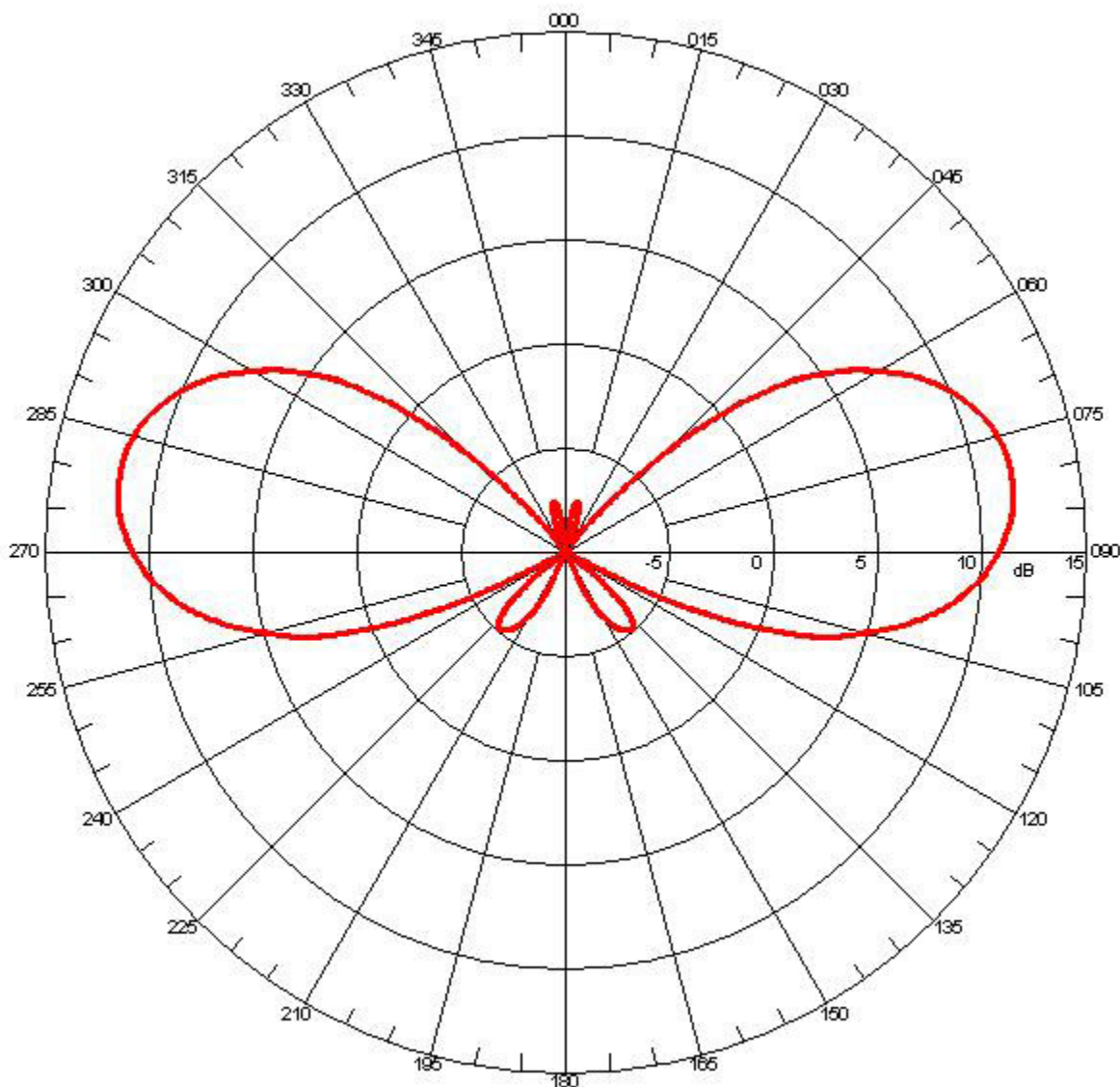
- 6 Panel Array
- Broad Band Coverage
- 1.7 - 2.5 GHz
- 12 dBi Gain Per Panel
- Rugged Polycarbonate Radome
- 0° - 10° User Adjustable Tilt
- Fully Maintainable
- Simultaneous L Band / S Band
- Can be used with customer-provided Block Downconverter (not included)
- Mounting Kit for Permanent & Temporary Mounting Included
- Integral Frequency Conversion:
  - L Band: 1725 - 1825 MHz, 1 dB Bandwidth, 1200 MHz LO Bandwidth
  - S Band: 1900 - 2500 MHz, 1 dB Bandwidth, 2808 MHz LO Bandwidth



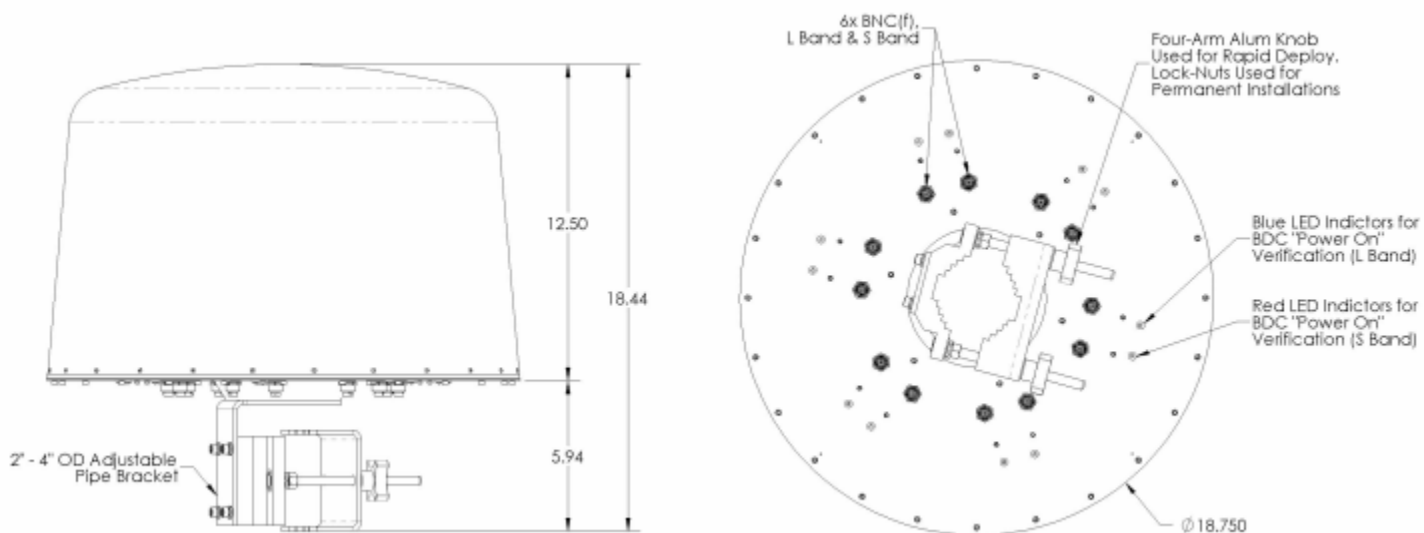
**Antenna Specifications**

Parameter	Value	Units	Tolerance
Antenna Pattern	Omni		
Frequency Band	L & S		
Impedance	50	Ohms	
Minimum Frequency	1.7 / 1,700	GHz / MHz	
Maximum Frequency	2.5 / 2,500	GHz / MHz	
Frequency Bandwidth	0.8 / 800	GHz / MHz	
Maximum Gain	12	dBi	
Polarization	Vertical		
Voltage Range	8 - 32	VDC	
Horizontal (AZ) Beamwidth	60	Degrees	
Vertical (EL) Beamwidth	30	Degrees	
Color	White		

Parameter	Value	Units	Tolerance
<b>Mount Style</b>	Pole Mount		
<b>Maximum Wind Velocity</b>	75 / 120	mph / kph	
<b>RF Connector Type</b>	BNC(f)		
<b>Product Height</b>	12.44 / 315.98	inches / mm	
<b>Product Diameter</b>	18.75 / 476.25	inches / mm	
<b>Product Weight</b>	15.0 / 6.8	lbs / kg	



**Elevation Pattern**



**Engineering Drawing**

Dimensions are in inches