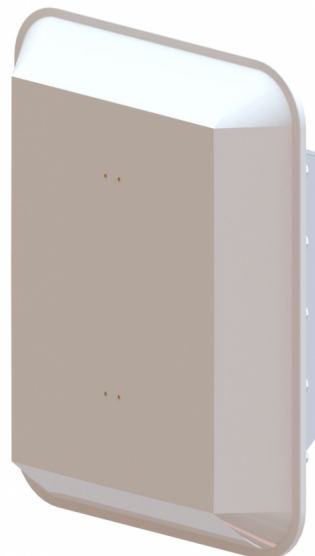


**Features:**

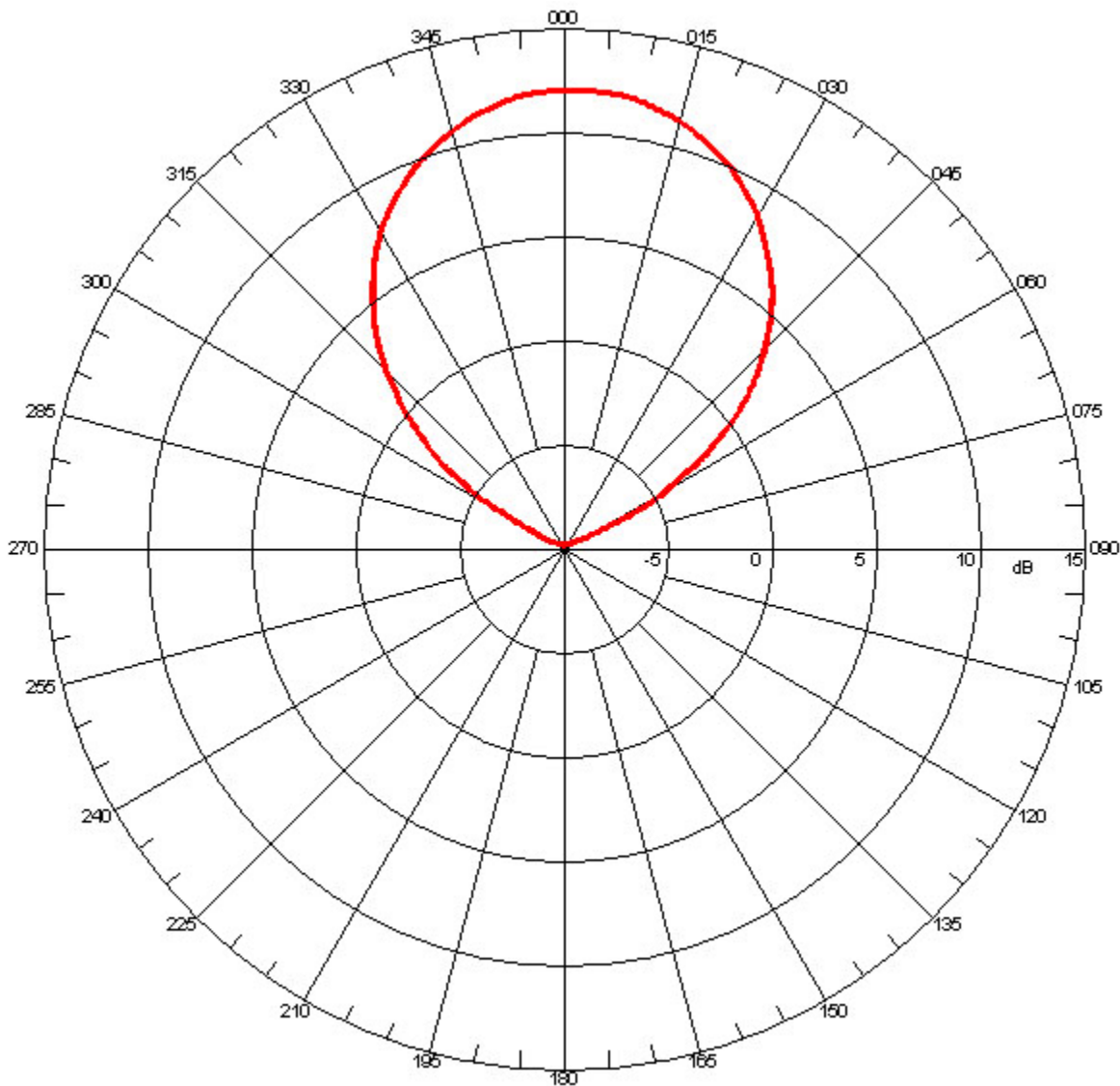
- Broad Band Coverage
- 1.7 - 2.5 GHz
- 12 dBi
- Removable Back Cover for Installation of Electronic Assemblies
- SMA Connector Located Inside Back Cover for Installation of Electronic Assemblies
- Designed for L & S Band communication in the following markets:
  - Law Enforcement
  - Surveillance
  - UAV & UGV Ground Stations
  - Military
  - Security
  - Broadcast



**Antenna Specifications**

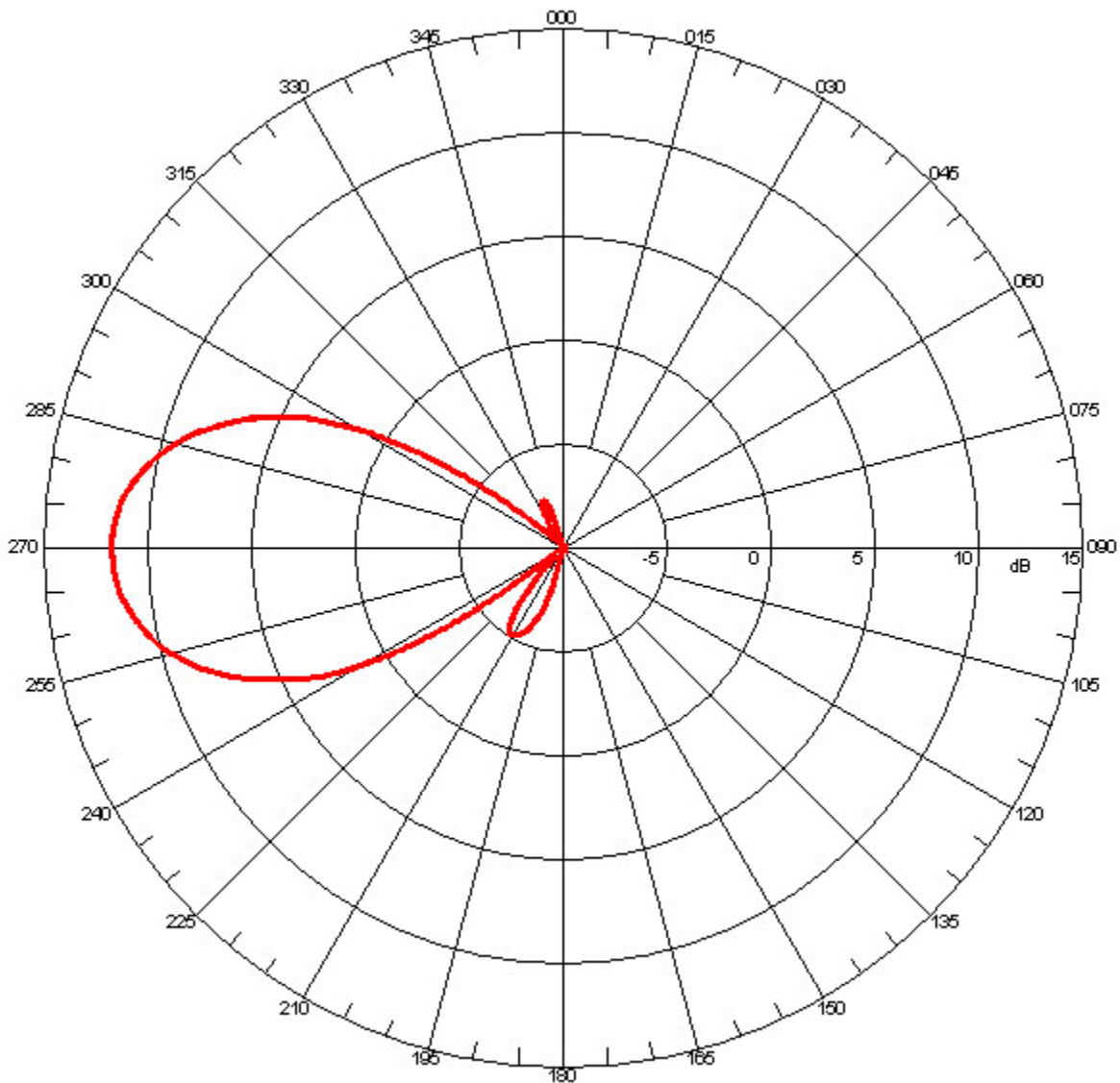
Parameter	Value	Units	Tolerance
<b>Antenna Pattern</b>	Directional Antenna		
<b>Frequency Band</b>	L & S		
<b>Impedance</b>	50	Ohms	
<b>Minimum Frequency</b>	1.7 / 1,700	GHz / MHz	
<b>Maximum Frequency</b>	2.5 / 2,500	GHz / MHz	
<b>Frequency Bandwidth</b>	0.8 / 800	GHz / MHz	
<b>Maximum VSWR</b>	1.5:1	Ratio	
<b>Maximum Gain</b>	12	dBi	
<b>Polarization</b>	Vertical		
<b>Maximum RF Input Power</b>	50	Watts	
<b>Horizontal (AZ) Beamwidth</b>	55	Degrees	
<b>Vertical (EL) Beamwidth</b>	32	Degrees	

Parameter	Value	Units	Tolerance
<b>Ground Plane Required</b>	No		
<b>Radome Material</b>	Polycarbonate		
<b>Color</b>	White		
<b>Mount Style</b>	Panel		
<b>Maximum Wind Velocity</b>	100 / 161	mph / kph	
<b>RF Connector Type</b>	TNC(f)		
<b>Product Length</b>	9.18 / 233.17	inches / mm	
<b>Product Width</b>	7.18 / 182.37	inches / mm	
<b>Product Height</b>	2.74 / 69.60	inches / mm	
<b>Product Weight</b>	16.0 / 453.6	oz / grams	



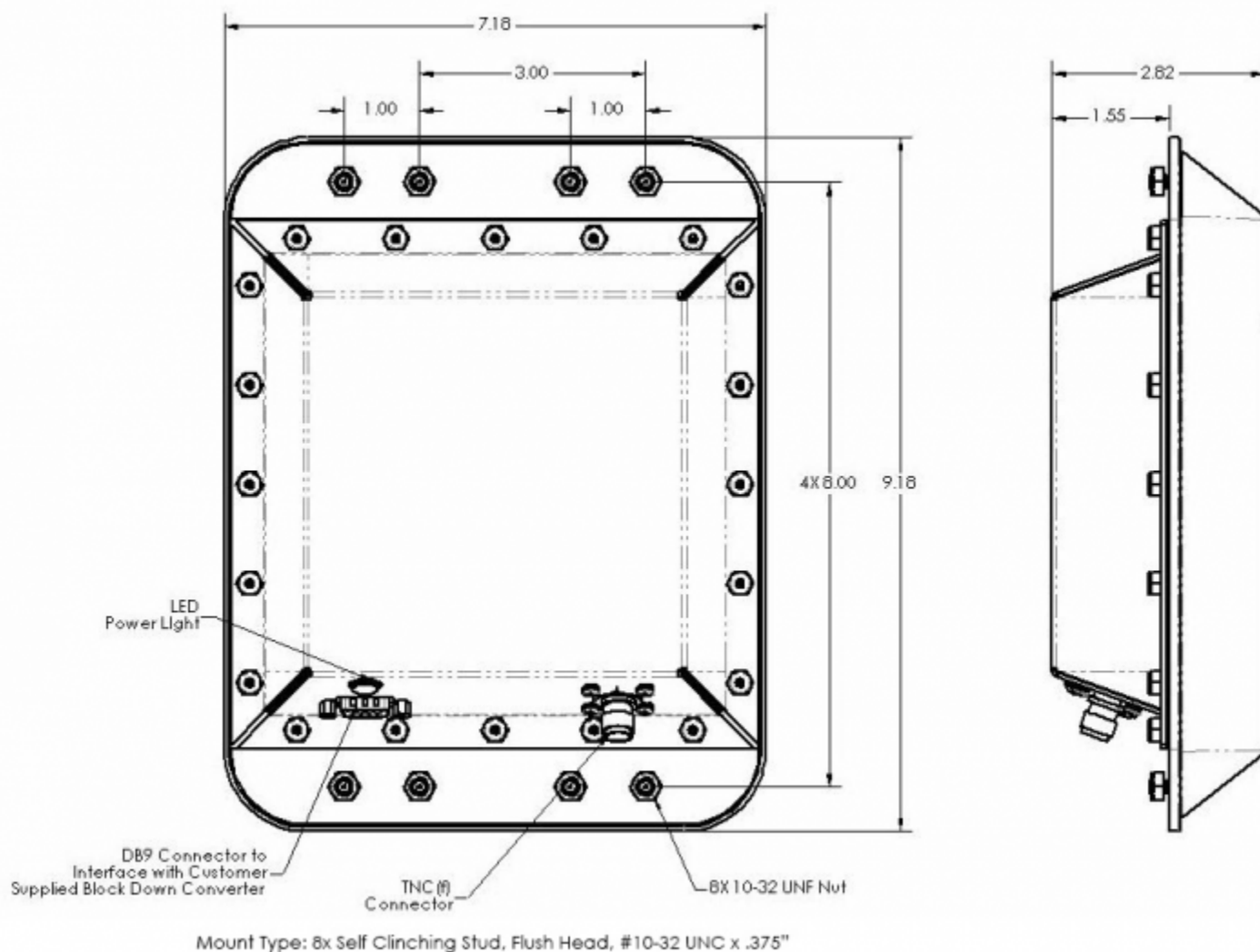
**Azimuth Pattern**

Referenced to +15dBi



**Elevation Pattern**

Referenced to +15dBi



### Engineering Drawing

Dimensions are in inches