

Overview

Southwest Antennas Part # 1080-173 is a small cavity bandpass filter designed for operation in federal C-Band radio network applications, with a center frequency of 4,410 MHz and a 20 MHz wide pass band of 4,400 – 4,420 MHz.

The narrow 20 MHz pass band is designed to offer the best performance and out-of-band rejection possible for users with narrow channel assignments, while still maintaining a physically compact product that can be easily integrated into deployed radio systems.

This cavity bandpass filter offers excellent -60 dB out-of-band rejection and is designed to be installed in-line between the radio and antenna, or integrated within other communication equipment when additional RF filtering is required to improve network performance. This bandpass filter is ideal for tactical radio systems, fixed site infrastructure, base station systems, network nodes, or other communication network infrastructure that operates in congested, high-interference RF environments.

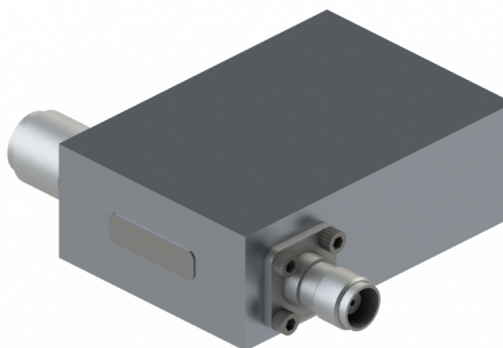
Southwest Antennas bandpass filters can be utilized to help eliminate interference by rejecting out-of-band noise from other co-located radios operating outside of the filter's operational bandpass range, providing increased performance for radio systems and attached antennas.

Note: Other federal C-Band cavity filters with a 20 MHz pass band are available from 4,400 MHz to 4,940 MHz in the same form factor. Contact Southwest Antennas or visit our website for details.

Features:

Stand-alone cavity filter module with RF connectors

- 2.4 dBa Insertion loss maximum at center frequency
- 15 dB return loss over pass band
- Can be quickly added to existing systems to help improve performance
- 4,480 – 4,500 MHz operational frequency range
- 4,490 MHz cF
- Machined aluminum housing, silver plated
- TNC(m) and TNC(f) RF connectors
 - Bi-directional design, no dedicated input or output port



Applications:

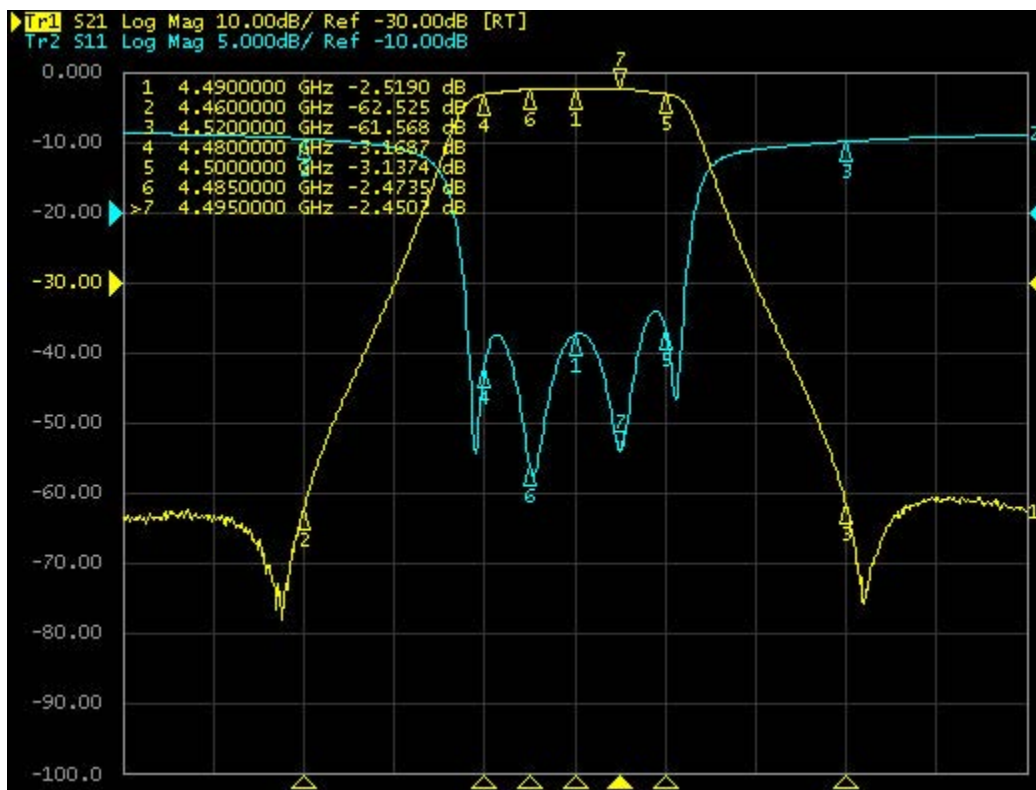
- Tactical radio systems
- Federal government radio systems
- Fixed site / point-to-point communication infrastructure
- Vehicle mounted radio systems

Product Specifications

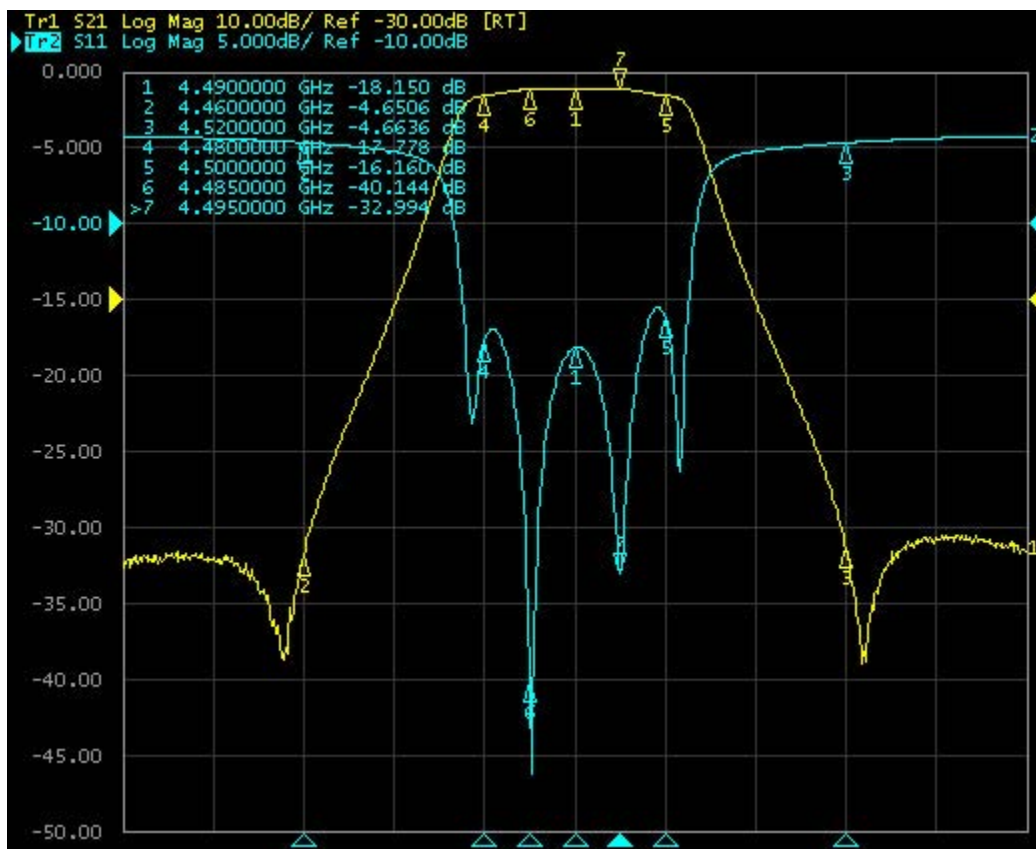
Parameter	Value	Units	Tolerance
Product Length	2.84 / 72.14	inches / mm	±0.020"
Product Width	1.98 / 50.17	inches / mm	±0.020"
Product Height	1.00 / 25.40	inches / mm	
Product Weight	14.0 / 396.9	oz / grams	

Filter Specifications

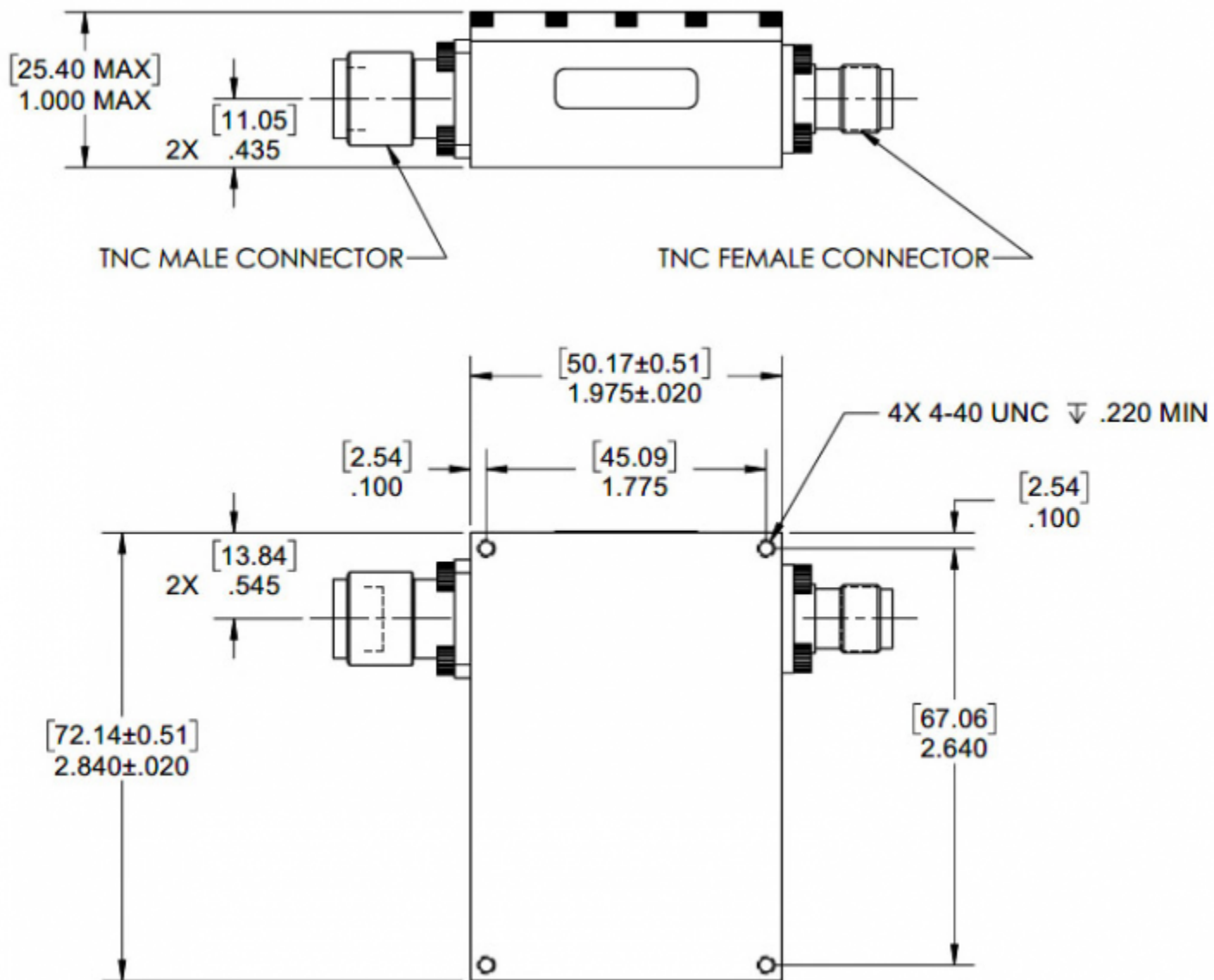
Parameter	Value	Units	Tolerance
Filter Type	Cavity Bandpass Filter		
Filter Frequency Band	C-Band		
Filter Impedance	50	Ohms	
Filter Min Frequency	4.4 / 4,400	GHz / MHz	
Filter Max Frequency	4.42 / 4,420	GHz / MHz	
Filter Frequency of Operation	4,400 – 4,420 MHz pass band		
Insertion Loss	2.4	dBa	Max at cF, 3.0 dBa maximum at band edges
Return Loss	15	dB	Min over 20 MHz pass band
Rejection 1	-60	dBc	Min ±30 MHz cF
Filter Power CW	40	Watts	
Operating Temp	-40 to +65	C	
Storage Temp	-55 to +125	C	
RF Connectors	TNC(m), TNC(f)		



Insertion Loss Plot



Return Loss Plot



Engineering Drawing

All dimensions in inches [mm in brackets]