

Overview

Southwest Antennas Part # 1034-008 is a directional sector antenna, housed in a compact cylindrical radome. This antenna features a C-Band 4.4 - 5.3 GHz operation frequency range and 12 dBi of peak gain.

For ease of installation, a directional arrow on the top cap of the radome denotes the transmit and receive direction of the antenna.

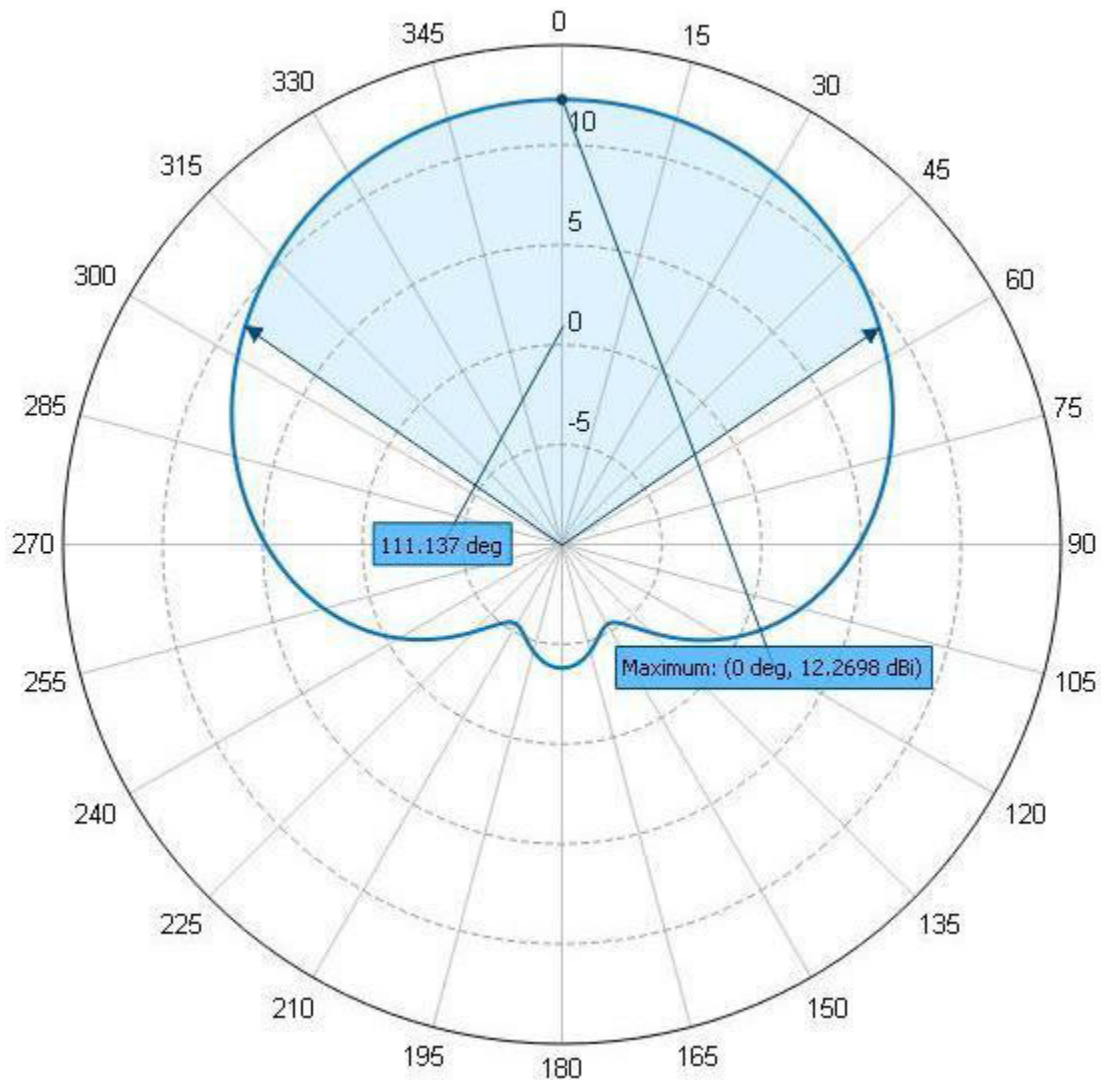
Features:

- 110 degree sector coverage
- 4.4 - 5.3 GHz operation frequency range
- For both transmit & receive applications
- 12 dBi Gain
- 15 dBi Front to Back Ratio
- All weather operation
- 20 Watt power handling
- Arrow on top cap denotes transmit and receive direction
- Type-N(m) RF connector
- Threaded mounting holes on base of antenna



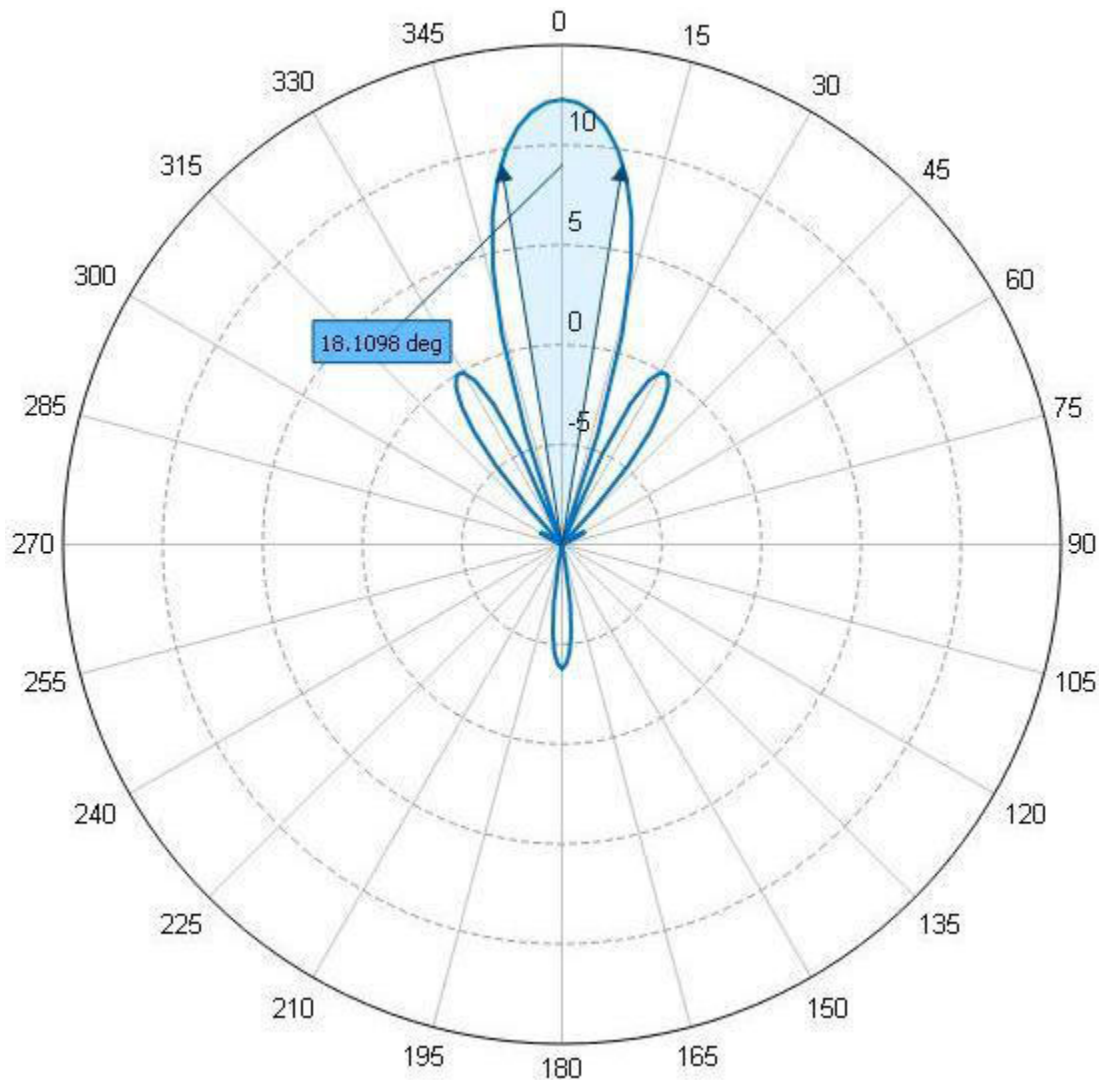
Antenna Specifications

Parameter	Value	Units	Tolerance
Antenna Pattern	Directional Antenna		
Frequency Band	C		
Impedance	50	Ohms	
Minimum Frequency	4.4 / 4,400	GHz / MHz	
Maximum Frequency	5.3 / 5,300	GHz / MHz	
Frequency Bandwidth	0.9 / 900	GHz / MHz	
Maximum VSWR	2.0:1	Ratio	
Maximum Gain	12	dBi	
Polarization	Vertical		
Maximum RF Input Power	20	Watts	
Horizontal (AZ) Beamwidth	110	Degrees	
Vertical (EL) Beamwidth	18	Degrees	
Ground Plane Required	No		
Color	Black		
Mounting Holes or Studs	4x # 6-32 UNC threaded holes in base		
Maximum Wind Velocity	75 / 120	mph / kph	
RF Connector Type	Type-N(m)		
Product Length	17.41 / 442.21	inches / mm	±0.13" (excluding RF connector)
Product Diameter	2.63 / 66.68	inches / mm	+ .020" / -.000"
Product Weight	9.8 / 276.7	oz / grams	



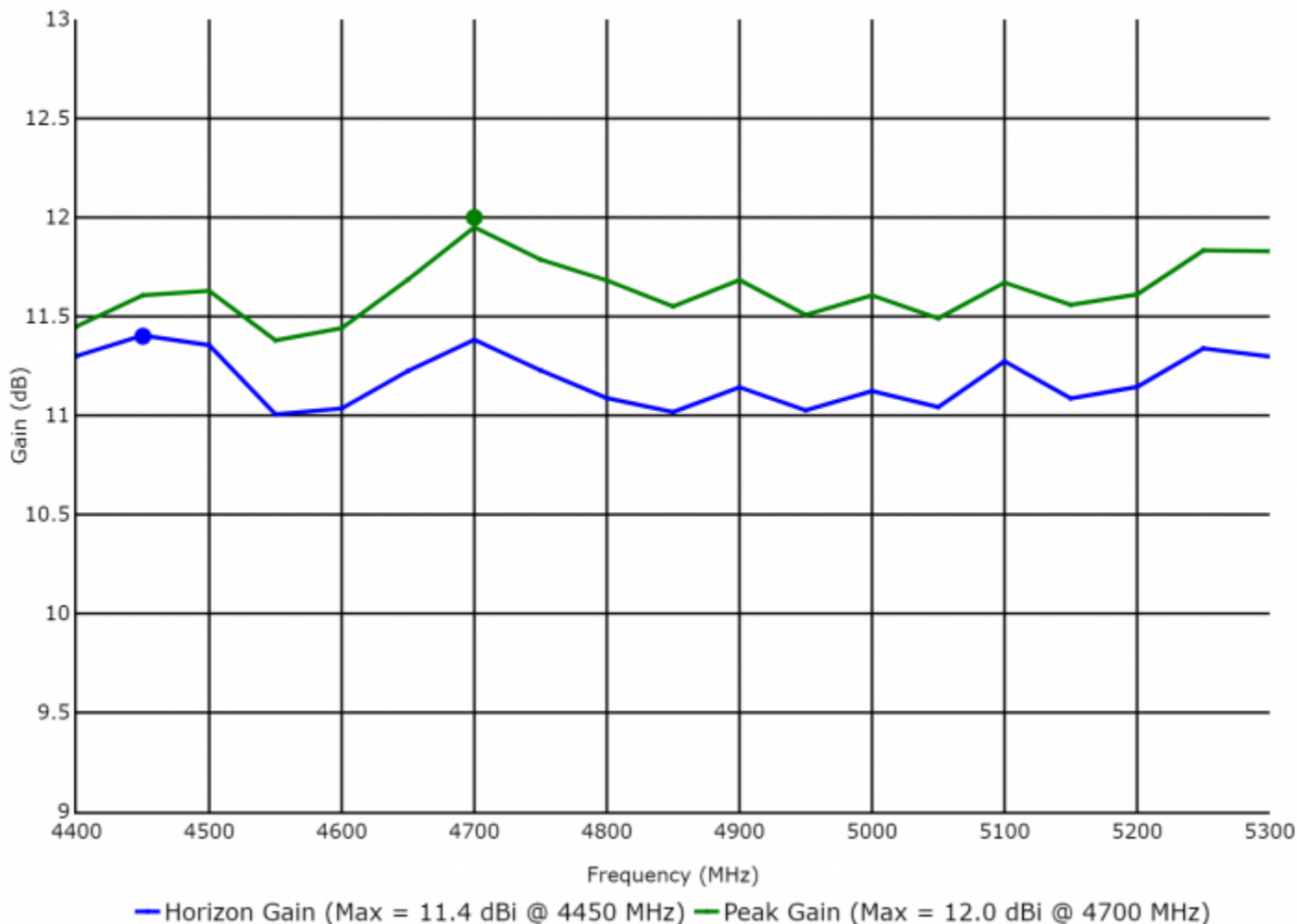
Azimuth Pattern

Referenced to +15 dBi

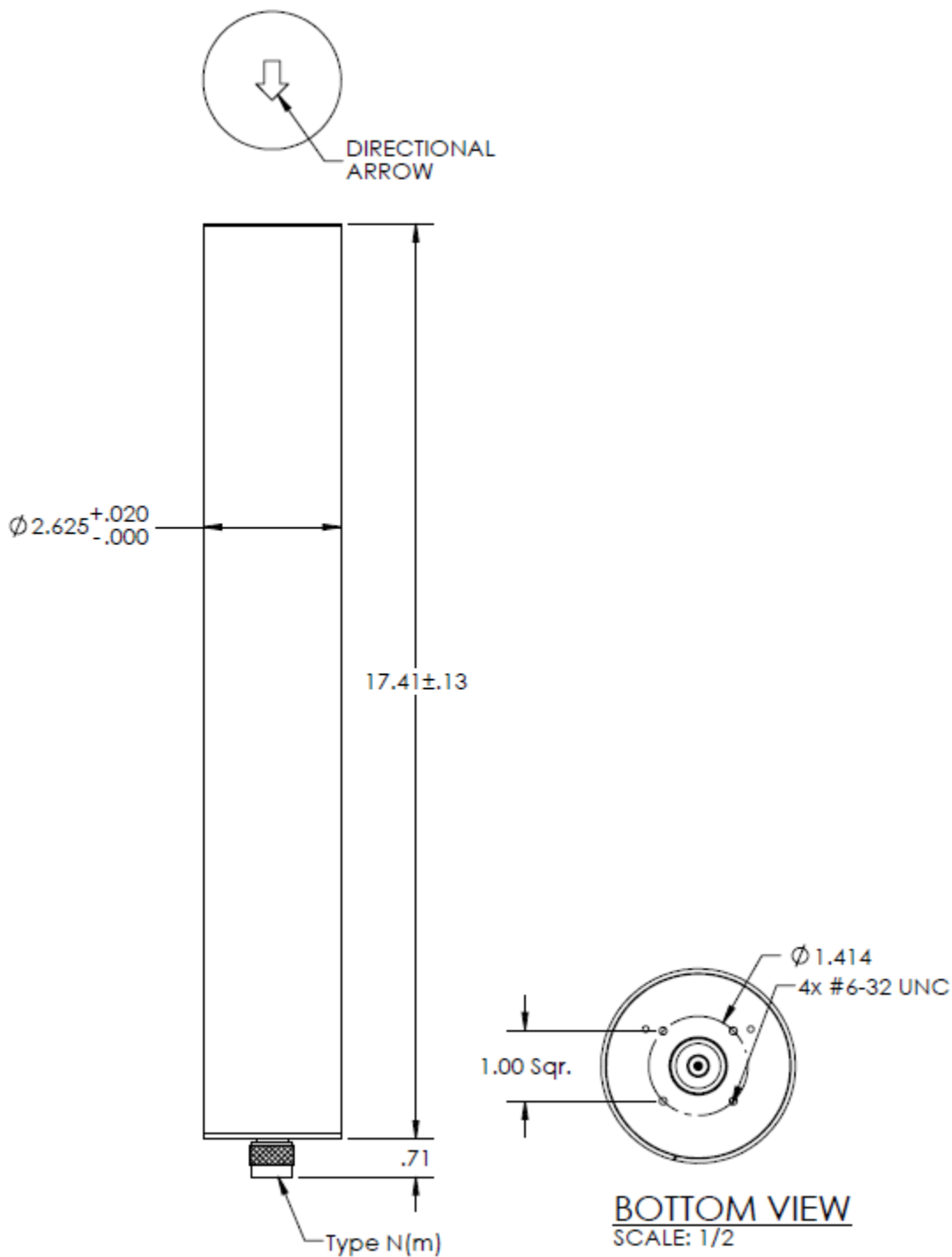


Elevation Pattern

Referenced to +15 dBi



Gain vs. Frequency



Engineering Drawing

All dimensions are in inches