

Overview

Southwest Antennas Part # 1055-346 is a compact 2X2 sector antenna for multi-port MIMO / MANET radio systems. This antenna operates over the 2.2 - 2.3 GHz frequency band, with a peak gain of 10 dBi. Two antenna elements each with their own TNC(f) RF connector offer slant left and slant right polarizations, providing transmit and receive polarization diversity with 56° of beamwidth per element..

This antenna's compact size make it easy to discreetly mount anywhere inside or outside, utilizing the two # 10-32 X.41" studs on the back panel of the antenna.

Features:

- 2 Input 2X2 MIMO Antenna
- 56° Beamwidth
- Dual Polarized Design:
 - 1x Slant Left
 - 1x Slant Right
- 2.2 - 2.3 GHz
- 10 dBi Peak Gain
- 50W Power Handling
- Polar White UV Stable Kydex Radome
- Rated for Indoor or Outdoor Use
- Compact Size
- 2x # 10-32 X.41" Mounting Studs on Back Panel
- 2x TNC(f) RF Connectors



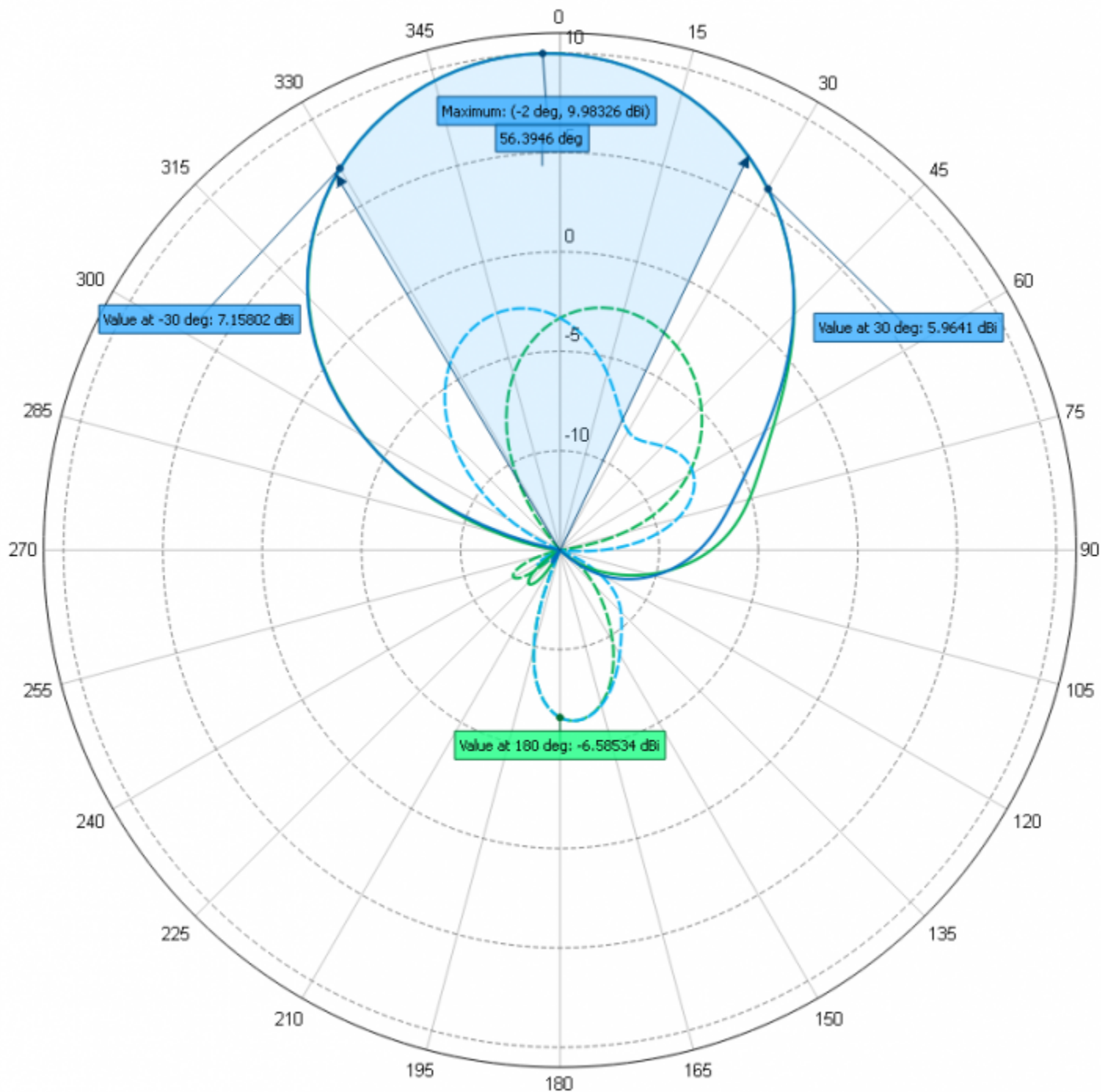
Applications:

- 2X2 MIMO / MANET Radio Systems
- Wireless Infrastructure Base Stations
- Planned City Wide / Urban Area Mesh Radio Networks
- Rapid Deploy Networks for Event Management and Security
- Emergency Management & Public Safety

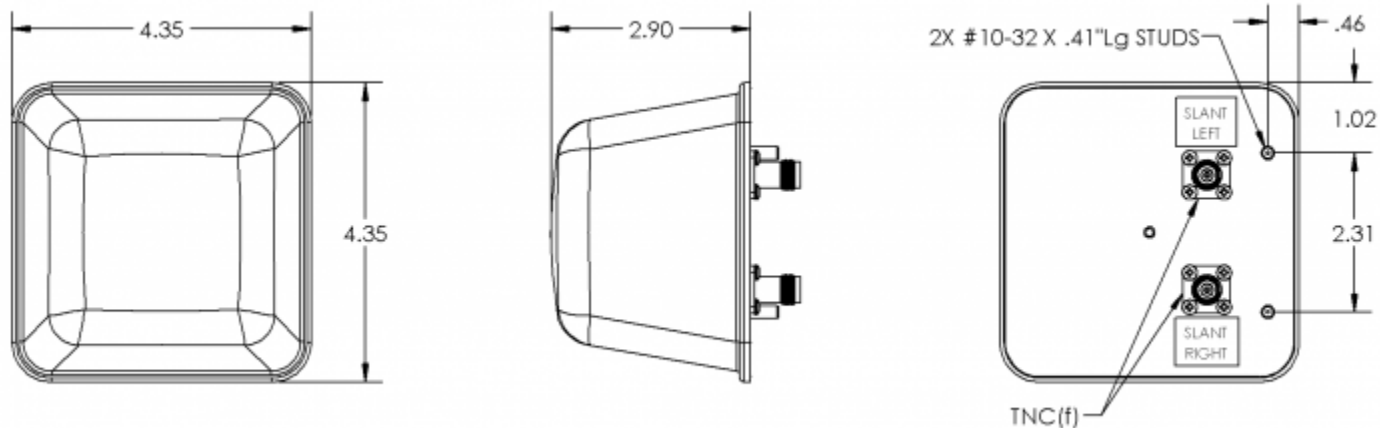
Antenna Specifications

Parameter	Value	Units	Tolerance
Antenna Pattern	Directional Antenna		
Frequency Band	S		
Impedance	50	Ohms	
Minimum Frequency	2.2 / 2,200	GHz / MHz	
Maximum Frequency	2.3 / 2,300	GHz / MHz	
Frequency Bandwidth	0.1 / 100	GHz / MHz	
Maximum VSWR	2.0:1	Ratio	
Maximum Gain	10	dBi	
Polarization	Slant L/R		
Maximum RF Input Power	50	Watts	Per Port
Horizontal (AZ) Beamwidth	56	Degrees	
Vertical (EL) Beamwidth	56	Degrees	
Ground Plane Required	No		
Radome Material	Kydex		
Color	White		
Mount Style	2X # 10-32 X .41" studs on back panel		
Maximum Wind Velocity	100 / 161	mph / kph	
RF Connector Type	TNC(f)		
Operating Temperature Range	-40 to +85	C	
Product Length	4.35 / 110.49	inches / mm	Inches
Product Width	2.90 / 73.66	inches / mm	

Parameter	Value	Units	Tolerance
Product Height	4.35 / 110.49	inches / mm	Inches
Product Weight	6.3 / 177.2	oz / grams	



Slant Left & Slant Right Horizontal and Vertical Patterns.
Referenced to +11dBi



Engineering Drawing

All dimensions are in inches