

Overview

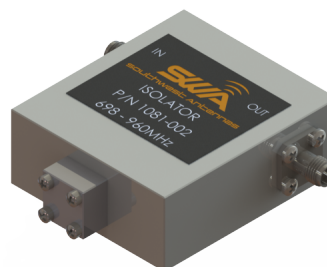
Southwest Antennas Part # 1081-002 is a two junction coax isolator with a minimum 17 dB isolation between 698 - 960 MHz and rated to 1 Kw of peak forward power, 25 watts peak reverse power. Part # 1081-002 features SMA(f) RF connectors on both ports.

Features:

- 698 - 960 MHz frequency range
- 17 dB minimum isolation
- 1 Kw maximum forward power
- 25 watts maximum reverse power
- SMA(f) RF connectors on both ports

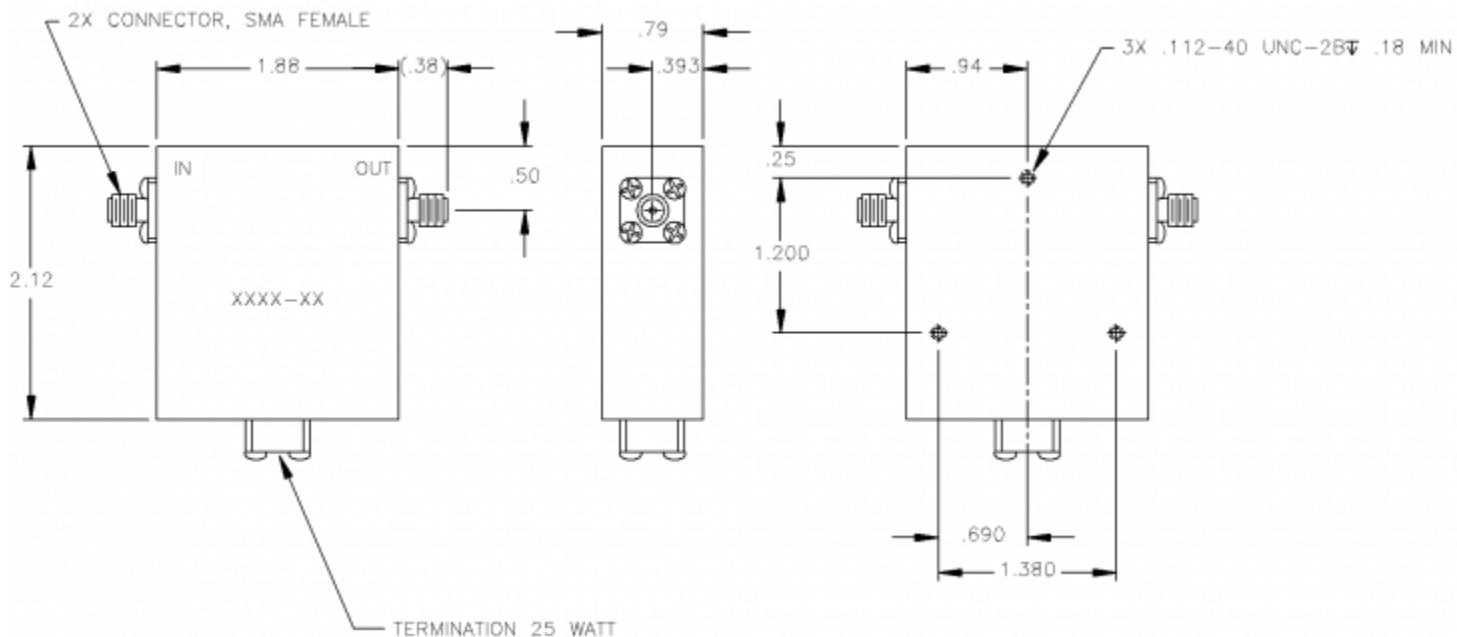
Applications:

- Military / DoD radio systems
- Federal and local law enforcement radio systems
- RF communication systems and wireless infrastructure
- Aircraft communication systems
- UAV / UGV communication systems



Product Specifications

Parameter	Value	Units	Tolerance
Frequency Band	UHF		
Impedance	50	Ohms	
Minimum Frequency	0.698 / 698	GHz / MHz	
Maximum Frequency	0.96 / 960	GHz / MHz	
Maximum VSWR	1.35:1	Ratio	
Insertion Loss	0.60	dB	Maximum
Isolation	17	dB	Minimum
Peak Power	1	Kw	
Average Power	200	watt	
Power Termination	25	watt	
Mounting Holes or Studs	3x .112-40 UNC-2B threaded screw holes, both sides of product		
RF Connector Type	SMA(f)		
Operating Temperature Range	0 to +75	C	
Product Length	1.88 / 47.75	inches / mm	
Product Width	2.12 / 53.85	inches / mm	
Product Height	0.79 / 20.07	inches / mm	
Product Weight	8.8 / 250.0	oz / grams	



Engineering Drawing

All dimensions are in inches