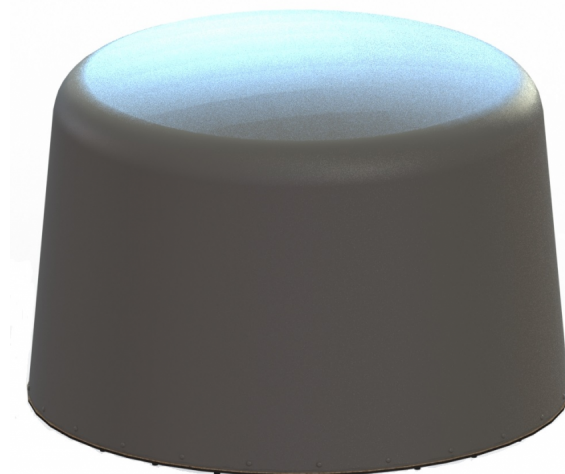


PRELIMINARY

Features:

- Requires Customer Installed Receiver Equipment
- 6 Panel S-Band Array
- Broad Band Coverage
- 1.7 - 2.5 GHz
- Receive Only
- 12 dBi Gain per Panel
- Rugged Polycarbonate Radome
- 0° to 10° User Adjustable Uptilt
- Fully Maintainable
- ROHS Compliant

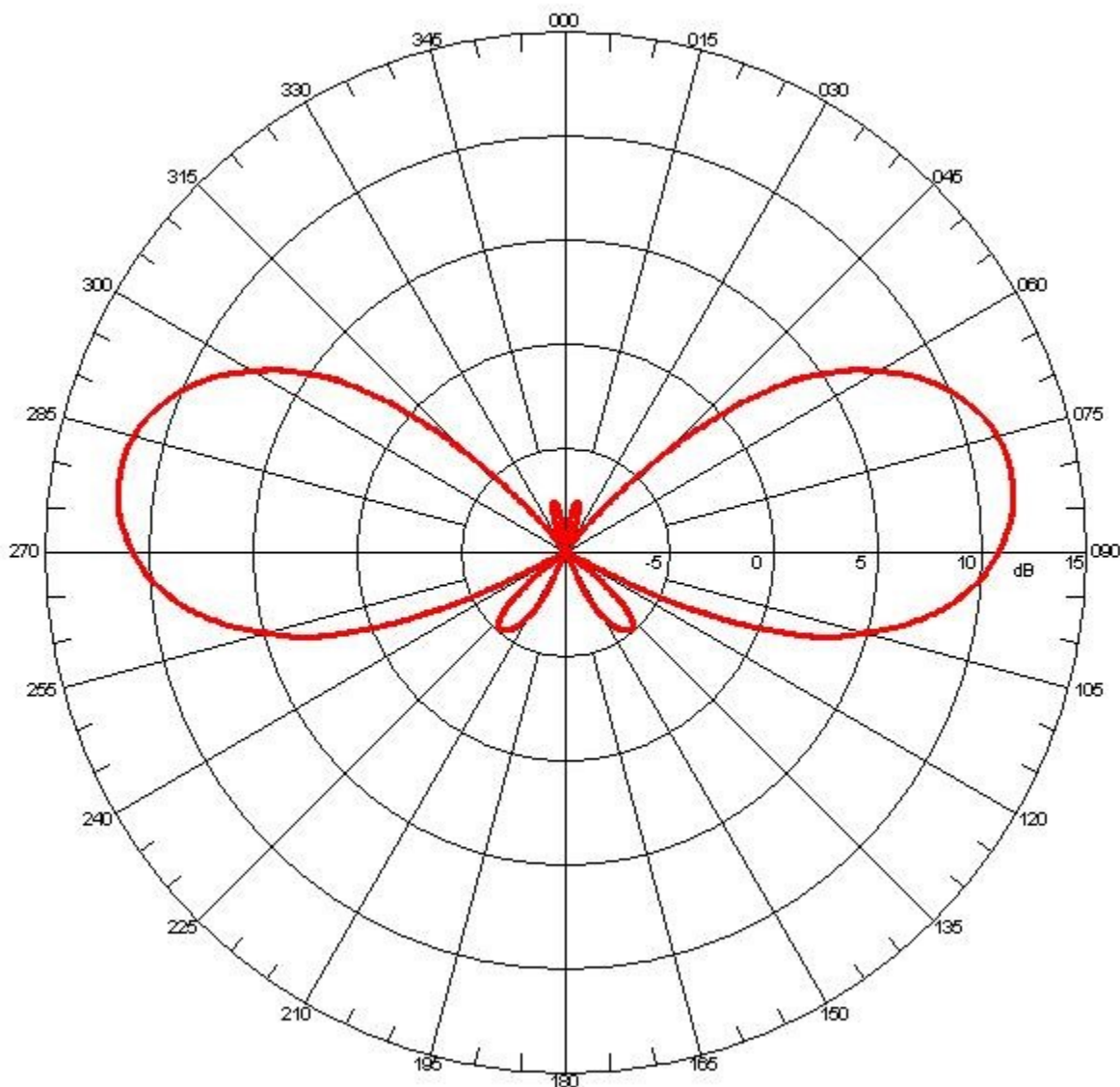


Antenna Specifications

Parameter	Value	Units	Tolerance
Frequency Band	S		
Impedance	50	Ohms	
Minimum Frequency	1.7 / 1,700	GHz / MHz	
Maximum Frequency	2.5 / 2,500	GHz / MHz	
Frequency Bandwidth	0.5 / 500	GHz / MHz	
Maximum VSWR	<2:1	Ratio	
Maximum Gain	12	dBi	Per Panel
Polarization	Vertical		
Horizontal (AZ) Beamwidth	60	Degrees	Per Panel
Vertical (EL) Beamwidth	30	Degrees	Per Panel
Color	Gray Pantone 424C		
Materials	Polycarbonate		

Parameter	Value	PRELIMINARY Units	Tolerance
Maximum Wind Velocity	75	mph	
RF Connector Type	Right Angle MMCX(m)		
IP Rating	IP65		
Product Height	12.50 / 317.50	inches / mm	
Product Diameter	18.75 / 476.25	inches / mm	
Product Weight	10.0 / 4.5	lbs / kg	Estimated

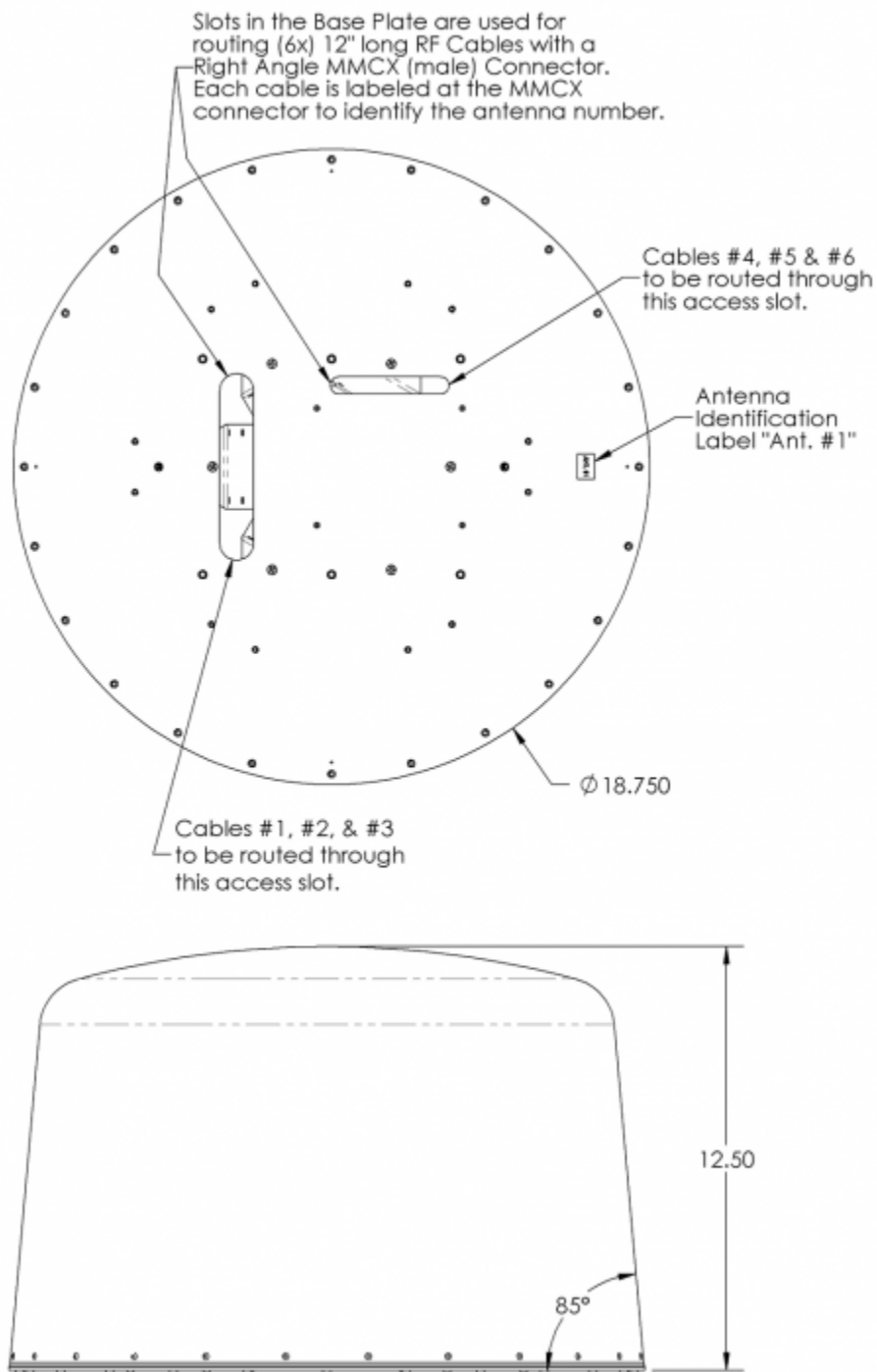
PRELIMINARY



Elevation Pattern

Referenced to 15 dBi (Note: Pattern Shows "X" Uptilt Setting)

PRELIMINARY



Engineering Drawing

All dimensions are in inches