

## Overview

Southwest Antennas Part # 1055-302 is an omni-directional S-Band antenna designed specifically for 4X4 MIMO and MANET radios with four ports. Covering an operation frequency range of 2.1 - 2.5 GHz with a peak gain of 3 dBi, the antenna features a strong magnetic mount base, allowing for easy mounting and removal from any magnetic metal object. 12 feet of cable allows for flexible antenna placement options.

Part # 1055-302 features 45° slant left / slant right antenna elements to increase the polarization diversity of attached MIMO / MANET radio systems. This is particularly useful in urban environments.

## Features:

- 4 Input MIMO Antenna:
  - 2 each, 45° Slant Right
  - 2 each, 45° Slant Left
- 2.1 - 2.5 GHz
- 3 dBi Peak Gain
- Heavy Duty Magnetic Mount Base
- Includes Black Neoprene Rubber Surface Protection Cover (Field Replaceable)
- Integrated Low Loss RF Cables, 12 feet nominal
- Other RF Cable Length & Connector Types Available
- Type-N(m) RF Connectors (4x)
- Includes Mesh Cable Bundle Protector
- Perfect for Vehicle Mount Antenna Applications



### Antenna Specifications

Parameter	Value	Units	Tolerance
Antenna Pattern	Omni Antenna		
Frequency Band	S		
Impedance	50	Ohms	
Minimum Frequency	2.1 / 2,100	GHz / MHz	
Maximum Frequency	2.5 / 2,500	GHz / MHz	
Frequency Bandwidth	0.4 / 400	GHz / MHz	
Maximum VSWR	2:1	Ratio	
Maximum Gain	3	dBi	
Polarization	Slant L/R		
Maximum RF Input Power	50	Watts	Per Port
Horizontal (AZ) Beamwidth	360	degrees	
Vertical (EL) Beamwidth	106	degrees	
Ground Plane Required	No		
Mount Style	Magnetic Mount Base with Surface Protector		
Mount Diameter	3.28 / 83.31	inches / mm	
Maximum Wind Velocity	200	mph	
RF Connector Type	Type-N(m)		
RF Cable Type	LMR 200		
RF Cable Length	12.00 / 3.66	ft / m	
Product Height	4.56 / 115.82	inches / mm	±.13"
Product Diameter	3.28 / 83.31	inches / mm	+ .020" / -.000"

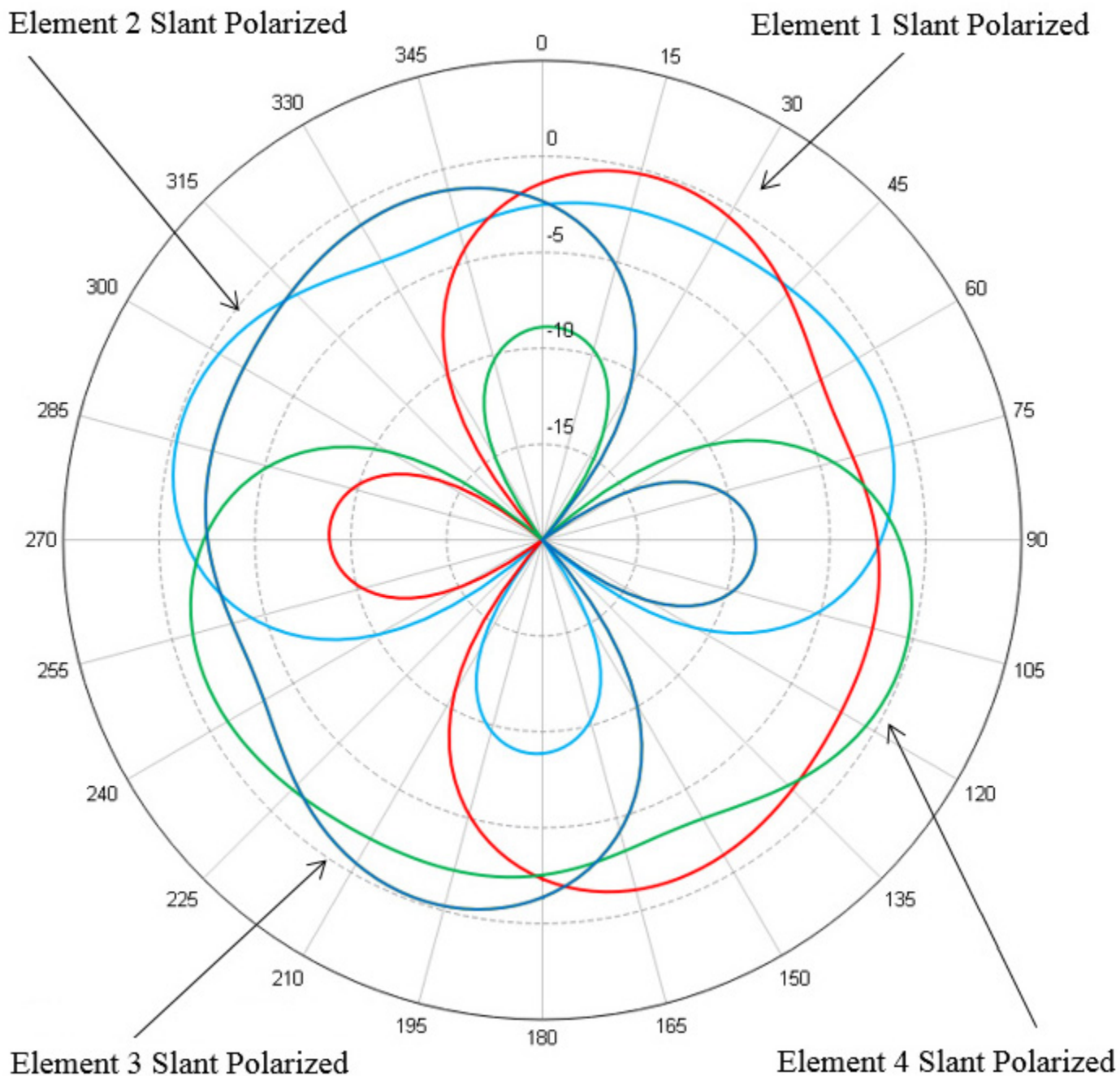


**Part # 1055-302**  
**4X4 MIMO Omni Antenna, 2.1 - 2.5 GHz, 3.0 dBi, 4-Input Quad 45° Slant Polarized**

---

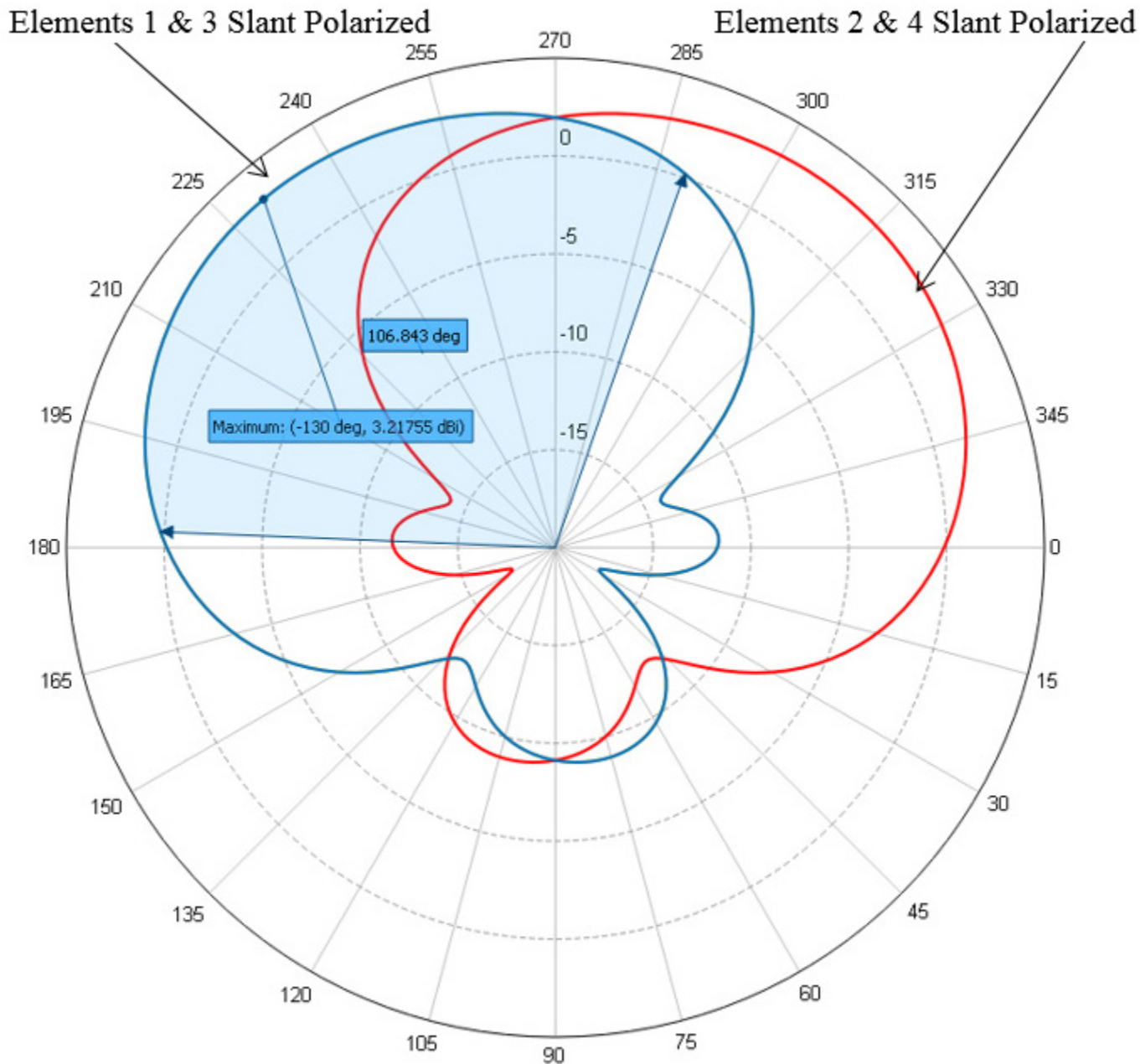
Parameter	Value	Units	Tolerance
Product Weight	2.5 / 1.1	lbs / kg	

---



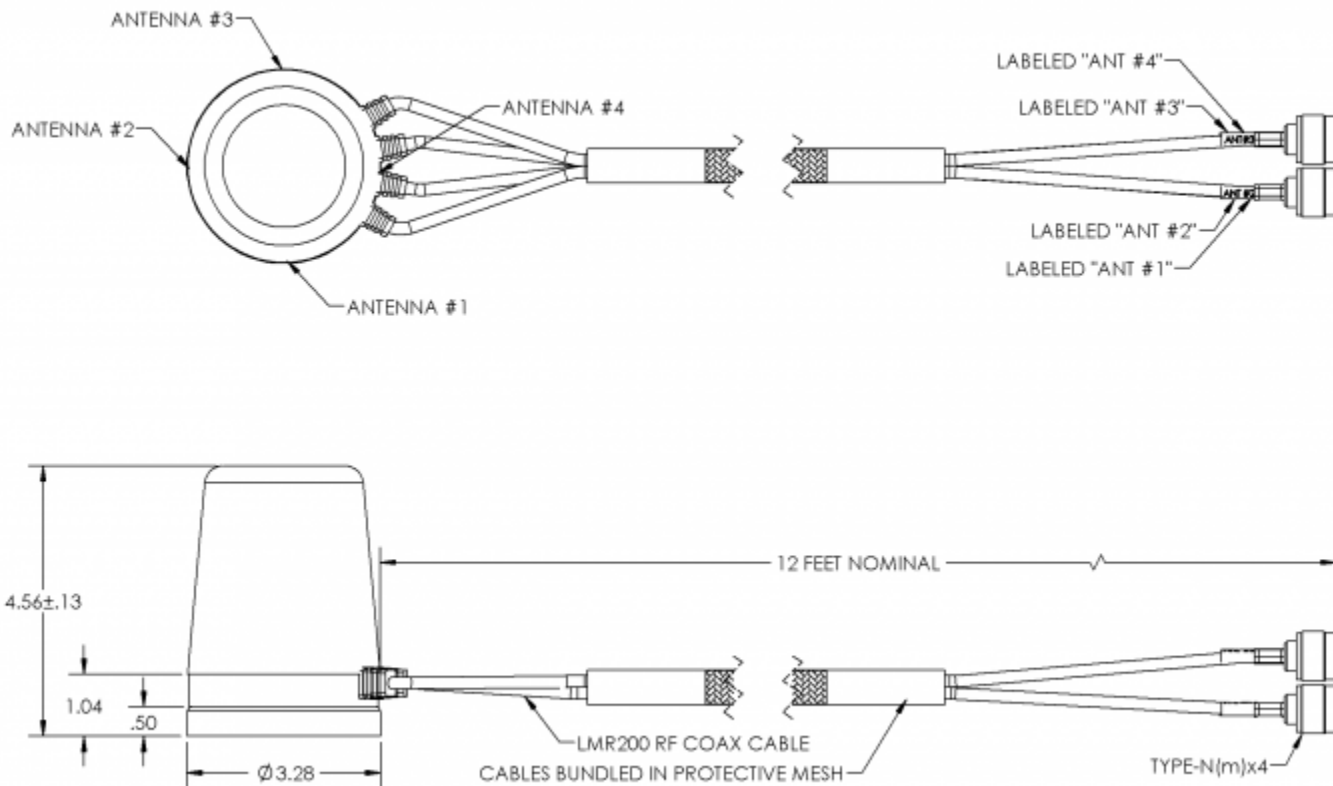
**Azimuth Pattern**

Referenced to +5 dBi (does not include cable loss)



**Elevation Pattern**

Referenced to +5 dBi (does not include cable loss)



### Engineering Drawing

All dimensions are in inches