

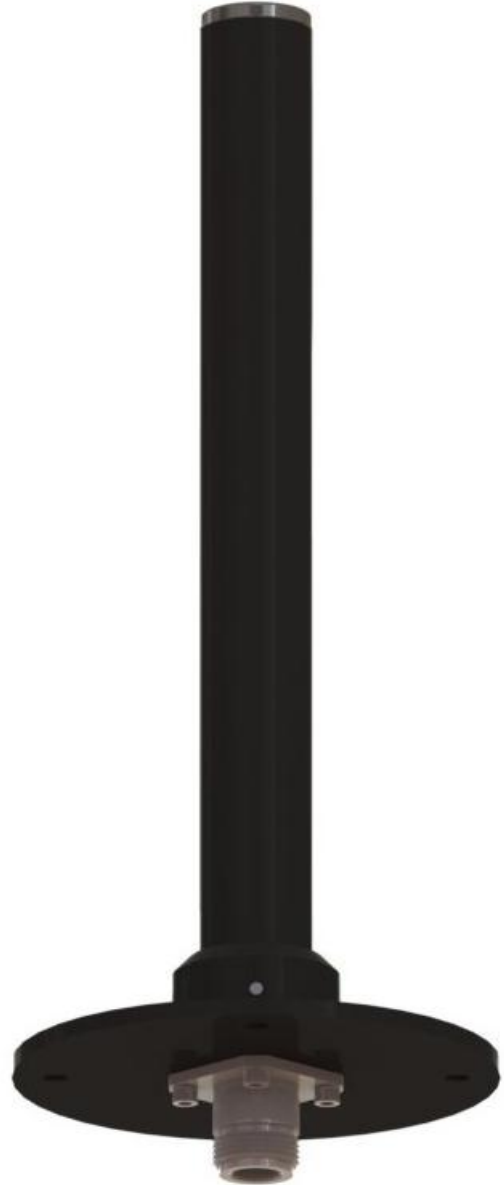
Model 1087-011

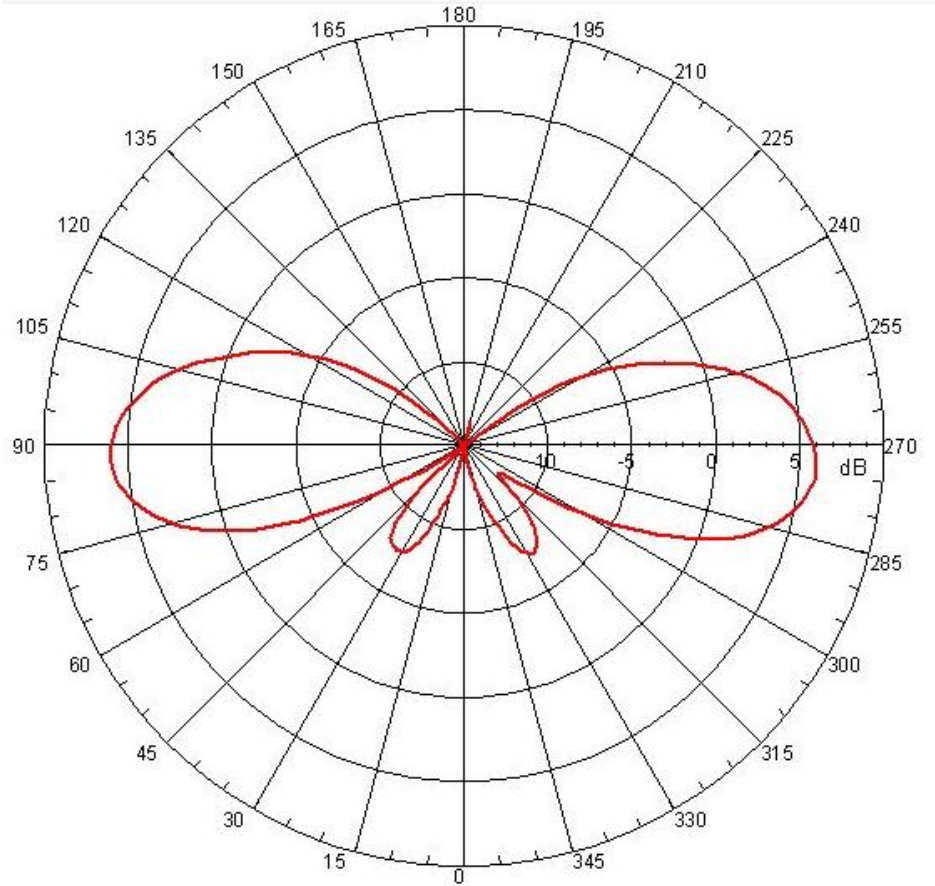
Product Features

- Broad Band Coverage
- 4 Section Collinear
- 4400-5000 MHz
- 50W power handling
- 6dBi Omni Radiation Pattern
- Rugged Construction Low Glare
Black Fiberglass Radome
- Flange Base

Specifications

Parameter	Value	Units	Description
Impedance	50	Ohms	
Minimum Frequency	4400	MHz	
Maximum Frequency	5000	MHz	
Maximum VSWR	<2:1	ratio	Between Min and Max Freq
Gain	6.0	dBi	Max Gain
Max Input Pwr	50	Watts	Watts(Max)
Polarization	Vertical		
Horizontal Beamwidth	360	Degrees	
Vertical Beamwidth	30	Degrees	
Connector Type	N(f)		Type N(f)
Length	7.88	Inches	+/-0.175"
Diameter	.812	Inches	+0.020 -0.000
Weight	6	oz.	
Maximum Wind Velocity	200	Km/Hr	





Elevation

