

## Model 1085-084

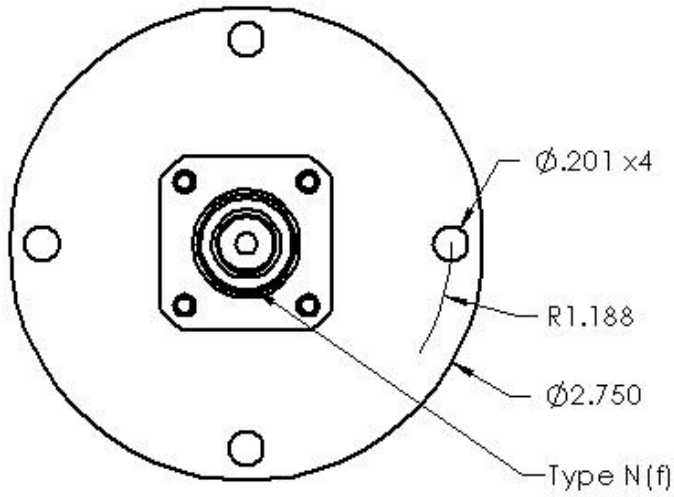
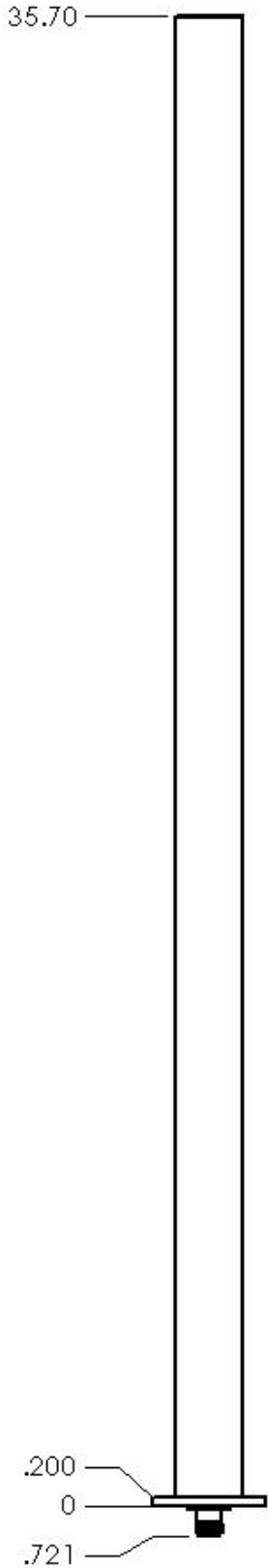
### Product Features

- Broad Band Coverage
- Collinear Dipole Array
- Flange Mount
- 2.2 to 2.5 GHz Frequency
- 32W Power Handling
- 11 dBi on Horizon in 2.2–2.5 GHz
- Rugged Construction - Gray
- Fiberglass Radome

### Specifications

Parameter	Value	Units	Description
Impedance	50	Ohms	
Minimum Frequency	2200	MHz	
Maximum Frequency	2500	MHz	
Maximum VSWR	<2:1	ratio	Between Min and Max Freq
Gain	11	dBi	Max Gain
Max Input Pwr	32	Watts	Watts(Max)
Polarization	Vertical		
Horizontal Beamwidth	360	Degrees	
Vertical Beamwidth	8	Degrees	
Connector Type	N(f)		Type N (female)
Length	35.7	Inches	+/-0.125"
Diameter	1.58	Inches	+/- .010
Weight	9.9	oz.	





Elevation Pattern

